

For Research Use Only

GPR142 Polyclonal antibody

Catalog Number: 18820-1-AP **1 Publications**



Basic Information

Catalog Number: 18820-1-AP	GenBank Accession Number: BC152987	Purification Method: Antigen affinity purification
Size: 150ul , Concentration: 207 µg/ml by Bradford method using BSA as the standard;	GeneID (NCBI): 350383	Recommended Dilutions: WB 1:500-1:1000
Source: Rabbit	Full Name: G protein-coupled receptor 142	
Isotype: IgG	Calculated MW: 462 aa, 51 kDa	
	Observed MW: 51-55 kDa	

Applications

Tested Applications: FC, WB, ELISA	Positive Controls: WB : SH-SY5Y cells,
Cited Applications: WB	
Species Specificity: human	

Background Information

GPR142, also named as PGR2, belongs to the G-protein coupled receptor 1 family. It is an orphan receptor. This antibody recognizes the 51-kDa GRP142.

Notable Publications

Author	Pubmed ID	Journal	Application
Bingru Zhao	35255833	BMC Genomics	WB

Storage

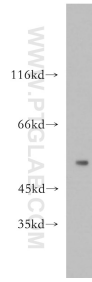
Storage:
Store at -20°C. Stable for one year after shipment.
Storage Buffer:
PBS with 0.02% sodium azide and 50% glycerol pH 7.3.
Aliquoting is unnecessary for -20°C storage

***** 20ul sizes contain 0.1% BSA**

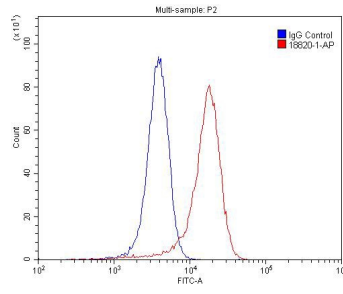
For technical support and original validation data for this product please contact:
T: 1 (888) 4PTGLAB (1-888-478-4522) (toll free in USA), or 1(312) 455-8498 (outside USA)
E: proteintech@ptglab.com
W: ptglab.com

This product is exclusively available under Proteintech Group brand and is not available to purchase from any other manufacturer.

Selected Validation Data



SH-SY5Y cells were subjected to SDS PAGE followed by western blot with 18820-1-AP (GPR142 antibody) at dilution of 1:300 incubated at room temperature for 1.5 hours.



1X10⁶ SH-SY5Y cells were stained with 0.2ug GPR142 antibody (18820-1-AP, red) and control antibody (blue). Fixed with 4% PFA blocked with 3% BSA (30 min). Alexa Fluor 488-conjugated AffiniPure Goat Anti-Rabbit IgG(H+L) with dilution 1:1500.