

For Research Use Only

CCNI2 Polyclonal antibody

Catalog Number: 18822-1-AP **1 Publications**



Basic Information

Catalog Number: 18822-1-AP	GenBank Accession Number: BC144417	Purification Method: Antigen affinity purification
Size: 150ul , Concentration: 350 µg/ml by Nanodrop;	GeneID (NCBI): 645121	Recommended Dilutions: WB 1:500-1:2000 IHC 1:20-1:200
Source: Rabbit	Full Name: cyclin I family, member 2	
Isotype: IgG	Calculated MW: 41 kDa	
	Observed MW: 42 kDa	

Applications

Tested Applications: IHC, WB, ELISA	Positive Controls: WB : HepG2 cells, human brain tissue, MCF-7 cells IHC : human lung cancer tissue,
Cited Applications: IF, WB	
Species Specificity: human	
Cited Species: mouse	
Note-IHC: suggested antigen retrieval with TE buffer pH 9.0; (*) Alternatively, antigen retrieval may be performed with citrate buffer pH 6.0	

Background Information

CCNI2 belongs to the cyclin family.

Notable Publications

Author	Pubmed ID	Journal	Application
Chengcheng Liu	28112194	Sci Rep	WB, IF

Storage

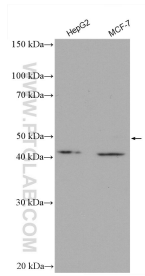
Storage:
Store at -20°C. Stable for one year after shipment.
Storage Buffer:
PBS with 0.02% sodium azide and 50% glycerol pH 7.3.
Aliquoting is unnecessary for -20°C storage

***** 20ul sizes contain 0.1% BSA**

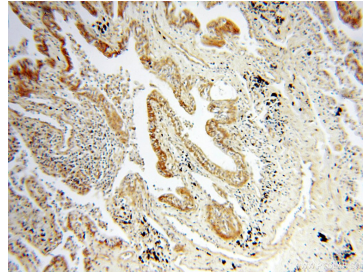
For technical support and original validation data for this product please contact:
T: 1 (888) 4PTGLAB (1-888-478-4522) (toll free in USA), or 1(312) 455-8498 (outside USA)
E: proteintech@ptglab.com
W: ptglab.com

This product is exclusively available under Proteintech Group brand and is not available to purchase from any other manufacturer.

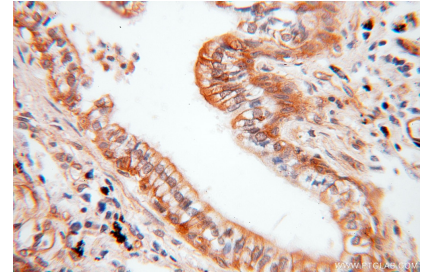
Selected Validation Data



Various lysates were subjected to SDS PAGE followed by western blot with 18822-1-AP (CCN12 antibody) at dilution of 1:1000 incubated at room temperature for 1.5 hours.



Immunohistochemical analysis of paraffin-embedded human lung cancer using 18822-1-AP (CCN12 antibody) at dilution of 1:100 (under 10x lens).



Immunohistochemical analysis of paraffin-embedded human lung cancer using 18822-1-AP (CCN12 antibody) at dilution of 1:100 (under 40x lens).