

For Research Use Only

RBP2 Polyclonal antibody

Catalog Number: 18825-1-AP

Featured Product

4 Publications



Basic Information

Catalog Number:

18825-1-AP

Size:

150ul, Concentration: 260 ug/ml by Nanodrop and 240 ug/ml by Bradford method using BSA as the standard;

Source:

Rabbit

Isotype:

IgG

GenBank Accession Number:

NM_005056

GeneID (NCBI):

5927

UNIPROT ID:

P29375

Full Name:

lysine (K)-specific demethylase 5A

Calculated MW:

192 kDa

Observed MW:

192 kDa

Purification Method:

Antigen affinity purification

Recommended Dilutions:

WB 1:500-1:1000

IP 0.5-4.0 ug for 1.0-3.0 mg of total protein lysate

IF-P 1:50-1:500

IF/ICC 1:50-1:500

Applications

Tested Applications:

WB, IF/ICC, IF-P, IP, ELISA

Cited Applications:

WB, IF

Species Specificity:

human, mouse, rat

Cited Species:

human, mouse, rat

Positive Controls:

WB: HeLa cells, HEK-293T cells

IP: HeLa cells,

IF-P: mouse small intestine tissue,

IF/ICC: HeLa cells,

Background Information

KDM5A, also named as JARID1A, RBBP2 and RBP2, belongs to the JARID1 histone demethylase family. KDM5A is a Histone demethylase that specifically demethylates 'Lys-4' of histone H3, thereby playing a central role in histone code. Does not demethylate histone H3 'Lys-9', H3 'Lys-27', H3 'Lys-36', H3 'Lys-79' or H4 'Lys-20'. RBP2 may stimulate transcription mediated by nuclear receptors. It may be involved in transcriptional regulation of Hox proteins during cell differentiation. It may participate in transcriptional repression of cytokines such as CXCL12.

Notable Publications

Author	Pubmed ID	Journal	Application
Wenxia Xu	29989047	Int J Biol Sci	WB
Guoyuan Pan	31926245	Life Sci	IF
Yizhuo Gao	36537648	Environ Toxicol	WB,IF

Storage

Storage:

Store at -20°C. Stable for one year after shipment.

Storage Buffer:

PBS with 0.02% sodium azide and 50% glycerol

Aliquoting is unnecessary for -20°C storage

*** 20ul sizes contain 0.1% BSA

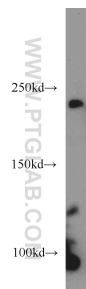
For technical support and original validation data for this product please contact:

T: 1 (888) 4PTGLAB (1-888-478-4522) (toll free in USA), or 1(312) 455-8498 (outside USA)

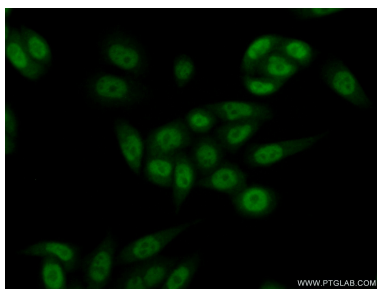
E: proteintech@ptglab.com
W: ptglab.com

This product is exclusively available under Proteintech Group brand and is not available to purchase from any other manufacturer.

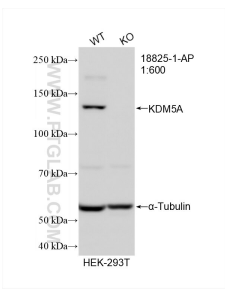
Selected Validation Data



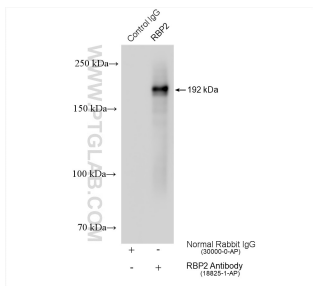
HeLa cells were subjected to SDS PAGE followed by western blot with 18825-1-AP (RBP2 antibody) at dilution of 1:500 incubated at room temperature for 1.5 hours.



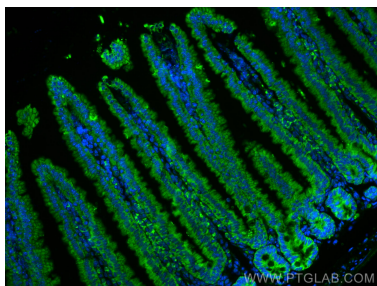
Immunofluorescent analysis of (10% Formaldehyde) fixed HeLa cells using 18825-1-AP (RBP2 antibody) at dilution of 1:50 and Alexa Fluor 488-conjugated AffiniPure Goat Anti-Rabbit IgG(H+L).



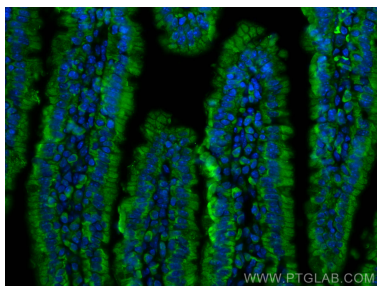
WB result of KDM5A antibody (18825-1-AP; 1:600; room temperature for 1.5 hours) with wild-type and KDM5A knockout HEK-293T cells.



IP result of anti-RBP2 (IP:18825-1-AP, 4ug; Detection:18825-1-AP 1:500) with HeLa cells lysate 1280 ug.



Immunofluorescent analysis of (4% PFA) fixed paraffin-embedded mouse small intestine tissue using RBP2 antibody (18825-1-AP) at dilution of 1:200 and CoraLite®488-Conjugated AffiniPure Goat Anti-Rabbit IgG(H+L) (SA00013-2). Heat mediated antigen retrieval with Tris-EDTA buffer (pH 9.0).



Immunofluorescent analysis of (4% PFA) fixed paraffin-embedded mouse small intestine tissue using RBP2 antibody (18825-1-AP) at dilution of 1:200 and CoraLite®488-Conjugated AffiniPure Goat Anti-Rabbit IgG(H+L) (SA00013-2). Heat mediated antigen retrieval with Tris-EDTA buffer (pH 9.0).