

For Research Use Only

CEP192 Polyclonal antibody

Catalog Number: 18832-1-AP

Featured Product

13 Publications



Basic Information

Catalog Number:

18832-1-AP

Size:

150ul, Concentration: 900 µg/ml by Nanodrop;

Source:

Rabbit

Isotype:

IgG

GenBank Accession Number:

BC144481

GeneID (NCBI):

55125

UNIPROT ID:

Q8TEP8

Full Name:

centrosomal protein 192kDa

Calculated MW:

213 kDa

Observed MW:

250-300 kDa

Purification Method:

Antigen affinity purification

Recommended Dilutions:

IP 0.5-4.0 ug for 1.0-3.0 mg of total protein lysate

IHC 1:50-1:500

IF/ICC 1:50-1:500

Applications

Tested Applications:

IP, IF, IHC, ELISA

Cited Applications:

WB, IF, IHC

Species Specificity:

human

Cited Species:

human, mouse

Positive Controls:

IP: HeLa cells,

IHC: human liver cancer tissue,

IF/ICC: hTERT-RPE1 cells, HeLa cells

Note-IHC: suggested antigen retrieval with TE buffer pH 9.0; (*) Alternatively, antigen retrieval may be performed with citrate buffer pH 6.0

Background Information

CEP192, also named as PP8407 and KIAA1569, interacts with SHBG. It is required for mitotic centrosome and spindle assembly. CEP192 appears to be a major regulator of pericentriolar material (PCM) recruitment, centrosome maturation, and centriole duplication.

Notable Publications

Author	Pubmed ID	Journal	Application
Yanli Liu	36238304	Front Immunol	IHC, IF
Tianyu Wu	36395215	Science	IF
Alyssa C Rezey	31101859	Sci Rep	IF

Storage

Storage:

Store at -20°C. Stable for one year after shipment.

Storage Buffer:

PBS with 0.02% sodium azide and 50% glycerol pH 7.3.

Aliquoting is unnecessary for -20°C storage

*** 20ul sizes contain 0.1% BSA

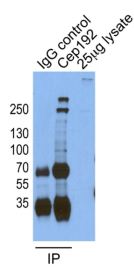
For technical support and original validation data for this product please contact:

T: 1 (888) 4PTGLAB (1-888-478-4522) (toll free in USA), or 1(312) 455-8498 (outside USA)

E: proteintech@ptglab.com
W: ptglab.com

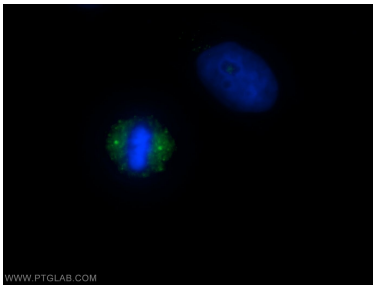
This product is exclusively available under Proteintech Group brand and is not available to purchase from any other manufacturer.

Selected Validation Data

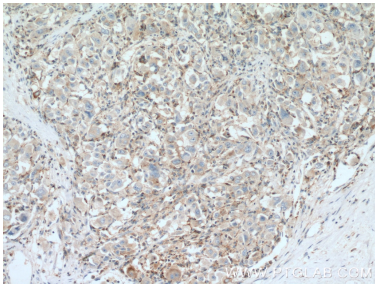


IP result of anti-CEP192 (18832-1-AP for IP and Detection) with HeLa cells.

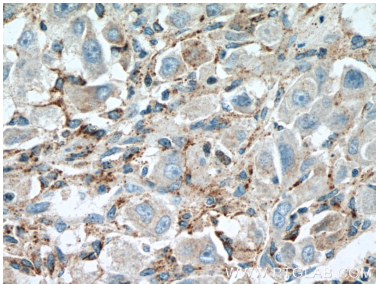
Immunofluorescent analysis of (-20°C Methanol) fixed hTERT-RPE1 cells using CEP192 antibody (18832-1-AP) at dilution of 1:150 and Cy3-conjugated Affinipure Goat Anti-Rabbit IgG(H+L), SCLT1 antibody (14875-1-AP, Magenta), CoraLite®488 ARL13B antibody (CL488-17711, green).



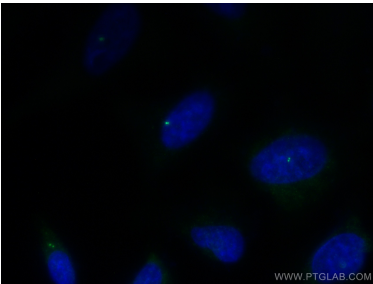
Immunofluorescent analysis of HeLa cells using 18832-1-AP (CEP192 antibody) at dilution of 1:50 and Alexa Fluor 488-conjugated AffiniPure Goat Anti-Rabbit IgG(H+L).



Immunohistochemical analysis of paraffin-embedded human liver cancer tissue slide using 18832-1-AP (CEP192 antibody) at dilution of 1:200 (under 10x lens. Heat mediated antigen retrieval with Tris-EDTA buffer (pH 9.0).



Immunohistochemical analysis of paraffin-embedded human liver cancer tissue slide using 18832-1-AP (CEP192 antibody) at dilution of 1:200 (under 40x lens. Heat mediated antigen retrieval with Tris-EDTA buffer (pH 9.0).



Immunofluorescent analysis of (-20°C Methanol) fixed HeLa cells using CEP192 antibody (18832-1-AP) at dilution of 1:200 and CoraLite®488-Conjugated AffiniPure Goat Anti-Rabbit IgG(H+L).