

For Research Use Only

KIF27

Polyclonal ANTIBODY

Catalog Number: 18833-1-AP



Basic Information

Catalog Number:
18833-1-AP

Size:
20 µg/150 µl

Source:
Rabbit

Isotype:
IgG

Purification Method:
Antigen affinity purification

Immunogen Catalog Number:

GenBank Accession Number:
BC140788

GeneID (NCBI):
55582

Full Name:
kinesin family member 27

Calculated MW:
160 kDa

Observed MW:

Recommended Dilutions:
IF 1:20-1:200

Applications

Tested Applications:
ELISA, IF

Species Specificity:
human, dog

Positive Controls:

IF : MDCK cells;

Background Information

KIF27 belongs to the kinesin-like protein family and KIF27 subfamily. The antibody can recognize all these 4 isoforms of KIF27.

Notable Publications

Author	Pubmed ID	Journal	Application
--------	-----------	---------	-------------

Storage

Storage:
Store at -20°C. Stable for one year after shipment.
Storage Buffer:
PBS with 0.1% sodium azide and 50% glycerol pH 7.3.
Aliquoting is unnecessary for -20°C storage

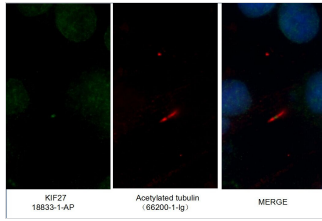
For technical support and original validation data for this product please contact:

T: 1 (888) 4PTGLAB (1-888-478-4522) (toll free in USA), or 1(312) 455-8498 (outside USA)

E: proteintech@ptglab.com
W: ptglab.com

This product is exclusively available under Proteintech Group brand and is not available to purchase from any other manufacturer.

Selected Validation Data



Immunofluorescent analysis of MDCK cells using 18833-1-AP(KIF27 antibody) at dilution of 1:50 and Alexa Fluor 488-conjugated AffiniPure Goat Anti-Rabbit IgG(H+L)