

For Research Use Only

# RAB12 Polyclonal antibody

Catalog Number: 18843-1-AP

Featured Product

20 Publications



## Basic Information

### Catalog Number:

18843-1-AP

### Size:

150ul, Concentration: 900 ug/ml by Nanodrop;

### Source:

Rabbit

### Isotype:

IgG

### GenBank Accession Number:

NM\_001025300

### GeneID (NCBI):

201475

### UNIPROT ID:

Q6IQ22

### Full Name:

RAB12, member RAS oncogene family

### Calculated MW:

27 kDa

### Observed MW:

28 kDa

### Purification Method:

Antigen affinity purification

### Recommended Dilutions:

WB: 1:2000-1:16000

IP: 0.5-4.0 ug for 1.0-3.0 mg of total protein lysate

IHC: 1:50-1:500

IF/ICC: 1:200-1:800

## Applications

### Tested Applications:

WB, IHC, IF/ICC, IP, ELISA

### Cited Applications:

WB, IF, IP, ColP

### Species Specificity:

human, mouse, rat

### Cited Species:

human, mouse, pig

**Note-IHC: suggested antigen retrieval with TE buffer pH 9.0; (\*) Alternatively, antigen retrieval may be performed with citrate buffer pH 6.0**

### Positive Controls:

**WB** : fetal human brain tissue, HeLa cells, mouse brain tissue, rat brain tissue

**IP** : HeLa cells,

**IHC** : human kidney tissue, mouse brain tissue, rat brain tissue

**IF/ICC** : HeLa cells,

## Background Information

RAB12 belongs to the small GTPase superfamily and Rab family. RAB12 locates in Golgi apparatus membrane.

## Notable Publications

Author	Pubmed ID	Journal	Application
Anna Tasegian	34515301	Biochem J	WB
Jillian H Kluss	35580815	Neurobiol Dis	WB
Jana Omar	33986343	Sci Rep	IP

## Storage

### Storage:

Store at -20°C. Stable for one year after shipment.

### Storage Buffer:

PBS with 0.02% sodium azide and 50% glycerol, pH7.3

Aliquoting is unnecessary for -20°C storage

\*\*\* 20ul sizes contain 0.1% BSA

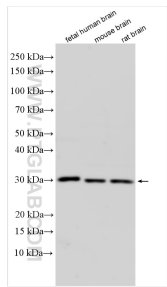
For technical support and original validation data for this product please contact:

T: 1 (888) 4PTGLAB (1-888-478-4522) (toll free in USA), or 1(312) 455-8498 (outside USA)

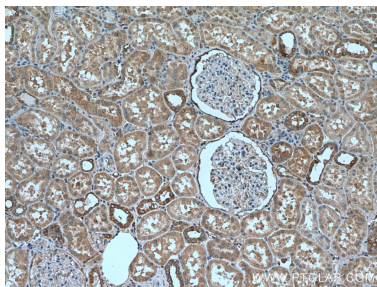
E: [proteintech@ptglab.com](mailto:proteintech@ptglab.com)  
W: [ptglab.com](http://ptglab.com)

This product is exclusively available under Proteintech Group brand and is not available to purchase from any other manufacturer.

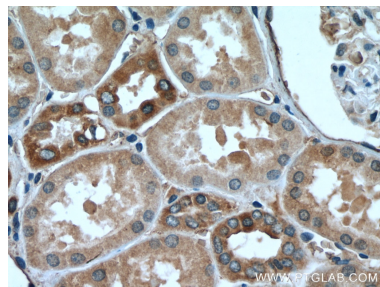
Selected Validation Data



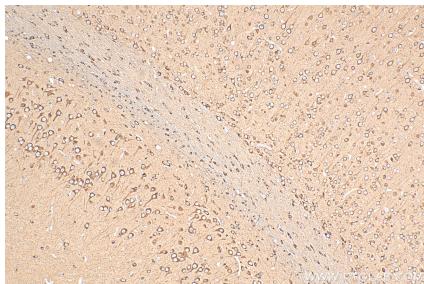
Various lysates were subjected to SDS PAGE followed by western blot with 18843-1-AP (RAB12 antibody) at dilution of 1:8000 incubated at room temperature for 1.5 hours.



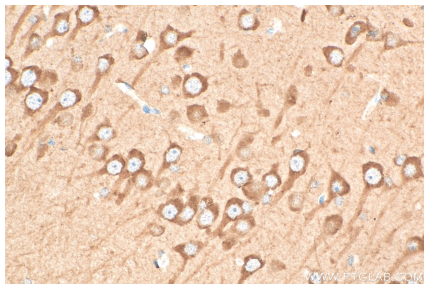
Immunohistochemical analysis of paraffin-embedded human kidney tissue slide using 18843-1-AP (RAB12 antibody) at dilution of 1:200 (under 10x lens). Heat mediated antigen retrieval with Tris-EDTA buffer (pH 9.0).



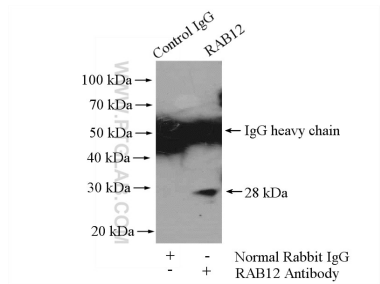
Immunohistochemical analysis of paraffin-embedded human kidney tissue slide using 18843-1-AP (RAB12 antibody) at dilution of 1:200 (under 40x lens). Heat mediated antigen retrieval with Tris-EDTA buffer (pH 9.0).



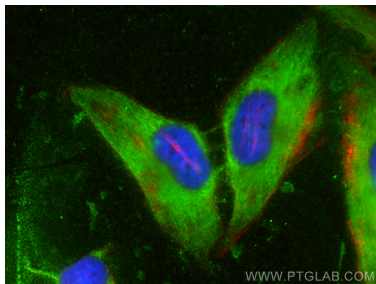
Immunohistochemical analysis of paraffin-embedded rat brain tissue slide using 18843-1-AP (RAB12 antibody) at dilution of 1:200 (under 10x lens). Heat mediated antigen retrieval with Tris-EDTA buffer (pH 9.0).



Immunohistochemical analysis of paraffin-embedded rat brain tissue slide using 18843-1-AP (RAB12 antibody) at dilution of 1:200 (under 40x lens). Heat mediated antigen retrieval with Tris-EDTA buffer (pH 9.0).



IP result of anti-RAB12 (IP:18843-1-AP, 4ug; Detection:18843-1-AP 1:500) with HeLa cells lysate 1200ug.



Immunofluorescent analysis of (-20°C Ethanol) fixed HeLa cells using RAB12 antibody (18843-1-AP) at dilution of 1:400 and CoraLite® 488-Conjugated Goat Anti-Rabbit IgG(H+L), CL594-phalloidin (red).