

For Research Use Only

MRPS17 Polyclonal antibody

Catalog Number: 18881-1-AP

15 Publications



Basic Information

Catalog Number:

18881-1-AP

Size:

150ul, Concentration: 550 ug/ml by Nanodrop and 273 ug/ml by Bradford method using BSA as the standard;

Source:

Rabbit

Isotype:

IgG

Immunogen Catalog Number:

AG13414

GenBank Accession Number:

BC054031

GeneID (NCBI):

51373

UNIPROT ID:

Q9Y2R5

Full Name:

mitochondrial ribosomal protein S17

Calculated MW:

130 aa, 15 kDa

Observed MW:

15 kDa

Purification Method:

Antigen affinity purification

Recommended Dilutions:

WB 1:500-1:1000

IHC 1:50-1:500

IF/ICC 1:200-1:800

Applications

Tested Applications:

WB, IHC, IF/ICC, ELISA

Cited Applications:

WB, IHC, IF

Species Specificity:

human, mouse, rat

Cited Species:

human, mouse

Note-IHC: suggested antigen retrieval with TE buffer pH 9.0; (*) Alternatively, antigen retrieval may be performed with citrate buffer pH 6.0

Positive Controls:

WB : HEK-293 cells, HeLa cells, HepG2 cells

IHC : human kidney tissue,

IF/ICC : HepG2 cells,

Notable Publications

| Author | Pubmed ID | Journal | Application |
|-------------------|-----------|-------------------|-------------|
| Ilaria Dalla Rosa | 24948607 | Nucleic Acids Res | WB |
| Wenjie Zhou | 34234855 | J Cancer | WB,IHC |
| Aurelio Reyes | 32735630 | PLoS Genet | WB |

Storage

Storage:

Store at -20°C. Stable for one year after shipment.

Storage Buffer:

PBS with 0.02% sodium azide and 50% glycerol pH 7.3.

Aliquoting is unnecessary for -20°C storage

*** 20ul sizes contain 0.1% BSA

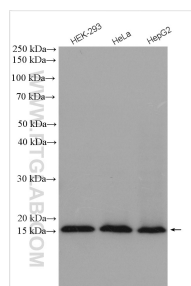
For technical support and original validation data for this product please contact:

T: 1 (888) 4PTGLAB (1-888-478-4522) (toll free in USA), or 1(312) 455-8498 (outside USA)

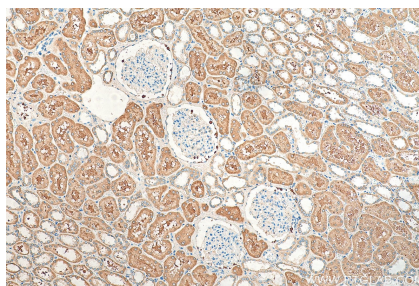
E: proteintech@ptglab.com
W: ptglab.com

This product is exclusively available under Proteintech Group brand and is not available to purchase from any other manufacturer.

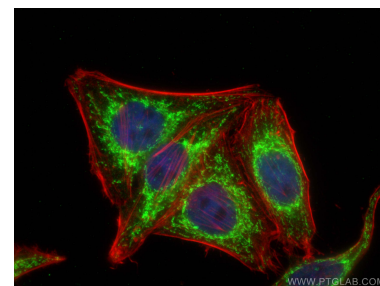
Selected Validation Data



Various lysates were subjected to SDS PAGE followed by western blot with 18881-1-AP (MRPS17 antibody) at dilution of 1:600 incubated at room temperature for 1.5 hours.



Immunohistochemical analysis of paraffin-embedded human kidney tissue slide using 18881-1-AP (MRPS17 antibody) at dilution of 1:200 (under 10x lens). Heat mediated antigen retrieval with Tris-EDTA buffer (pH 9.0).



Immunofluorescent analysis of (4% PFA) fixed HepG2 cells using MRPS17 antibody (18881-1-AP) at dilution of 1:400 and CoraLite@488-Conjugated Goat Anti-Rabbit IgG(H+L) (SA00013-2), CL594-phalloidin (red).