

For Research Use Only

# LAPTM4B Polyclonal antibody

Catalog Number: 18895-1-AP

Featured Product

6 Publications



## Basic Information

<b>Catalog Number:</b> 18895-1-AP	<b>GenBank Accession Number:</b> BC014129	<b>Purification Method:</b> Antigen affinity purification
<b>Size:</b> 150ul, Concentration: 450 µg/ml by Nanodrop;	<b>GeneID (NCBI):</b> 55353	<b>Recommended Dilutions:</b> WB 1:500-1:2000 IHC 1:20-1:200
<b>Source:</b> Rabbit	<b>Full Name:</b> lysosomal protein transmembrane 4 beta	
<b>Isotype:</b> IgG	<b>Calculated MW:</b> 41 kDa	
<b>Immunogen Catalog Number:</b> AG13521	<b>Observed MW:</b> 24 kDa	

## Applications

### Tested Applications:

IHC, WB, ELISA

### Cited Applications:

IF, IHC, WB

### Species Specificity:

human, mouse, rat

### Cited Species:

human

**Note-IHC: suggested antigen retrieval with TE buffer pH 9.0; (\*) Alternatively, antigen retrieval may be performed with citrate buffer pH 6.0**

### Positive Controls:

WB: mouse lymph tissue, rat lymph tissue

IHC: human liver cancer tissue, human heart tissue

## Background Information

LAPTM4B, a novel oncoprotein, is associated with the prognosis of cancer, and may play important roles in the initiation, promotion and metastasis of tumors. It was initially identified as a hepatocellular carcinoma-associated gene, and was recently shown to be up-regulated in various human cancers. Some studies indicated that LAPTM4B may be a useful marker of prognosis in ovarian carcinoma and endometrial cancer. LAPTM4B belongs to the LAPTM4/LAPTM5 transporter family. It has 3 isoforms with molecular masses 41 kDa, 35 kDa and 24 kDa. This antibody can recognize all the 3 isoforms of LAPTM4B.

## Notable Publications

Author	Pubmed ID	Journal	Application
Xiaojun Tan	27621469	Proc Natl Acad Sci U S A	IF
Ruth Milkereit	25998567	Nat Commun	WB
Shengfei Zhou	31084933	Biochem Biophys Res Commun	WB, IHC, IF

## Storage

### Storage:

Store at -20°C. Stable for one year after shipment.

### Storage Buffer:

PBS with 0.02% sodium azide and 50% glycerol pH 7.3.

Aliquoting is unnecessary for -20°C storage

\*\*\* 20ul sizes contain 0.1% BSA

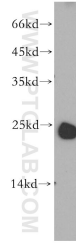
For technical support and original validation data for this product please contact:

T: 1 (888) 4PTGLAB (1-888-478-4522) (toll free in USA), or 1(312) 455-8498 (outside USA)

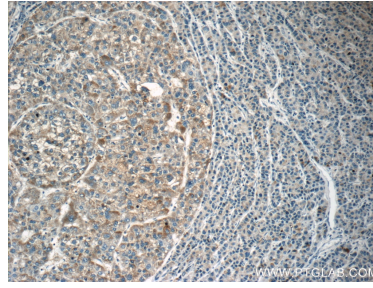
E: [proteintech@ptglab.com](mailto:proteintech@ptglab.com)  
W: [ptglab.com](http://ptglab.com)

This product is exclusively available under Proteintech Group brand and is not available to purchase from any other manufacturer.

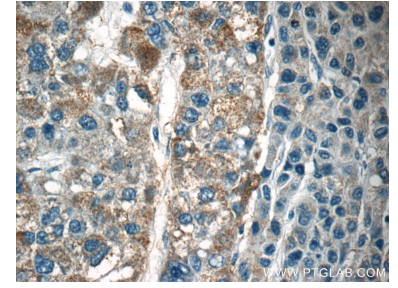
## Selected Validation Data



mouse lymph tissue were subjected to SDS PAGE followed by western blot with 18895-1-AP (LAPTM4B antibody) at dilution of 1:800 incubated at room temperature for 1.5 hours.



Immunohistochemical analysis of paraffin-embedded human liver cancer tissue slide using 18895-1-AP (LAPTM4B Antibody) at dilution of 1:50 (under 10x lens).



Immunohistochemical analysis of paraffin-embedded human liver cancer tissue slide using 18895-1-AP (LAPTM4B Antibody) at dilution of 1:50 (under 40x lens).