

For Research Use Only

LSM7 Polyclonal antibody

Catalog Number: 18941-1-AP **1 Publications**



Basic Information

Catalog Number: 18941-1-AP	GenBank Accession Number: BC018621	Purification Method: Antigen affinity purification
Size: 150ul , Concentration: 200 µg/ml by Bradford method using BSA as the standard;	GeneID (NCBI): 51690	Recommended Dilutions: WB 1:500-1:1000 IHC 1:20-1:200
Source: Rabbit	Full Name: LSM7 homolog, U6 small nuclear RNA associated (<i>S. cerevisiae</i>)	
Isotype: IgG	Calculated MW: 12 kDa	
Immunogen Catalog Number: AG13498	Observed MW: 12 kDa	

Applications

Tested Applications: IHC, WB, ELISA	Positive Controls: WB : HeLa cells, IHC : human lymphoma,
Cited Applications: WB	
Species Specificity: human, mouse, rat	
Cited Species: human	

Note-IHC: suggested antigen retrieval with TE buffer pH 9.0; (*) Alternatively, antigen retrieval may be performed with citrate buffer pH 6.0

Background Information

Notable Publications

Author	Pubmed ID	Journal	Application
Olesja Popow	31160382	Mol Cancer Res	WB

Storage

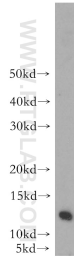
Storage:
Store at -20°C. Stable for one year after shipment.
Storage Buffer:
PBS with 0.02% sodium azide and 50% glycerol pH 7.3.
Aliquoting is unnecessary for -20°C storage

*** 20ul sizes contain 0.1% BSA

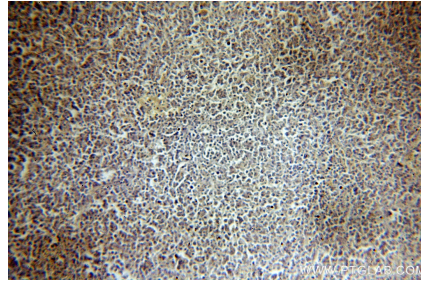
For technical support and original validation data for this product please contact:
T: 1 (888) 4PTGLAB (1-888-478-4522) (toll free in USA), or 1(312) 455-8498 (outside USA) E: proteintech@ptglab.com W: ptglab.com

This product is exclusively available under Proteintech Group brand and is not available to purchase from any other manufacturer.

Selected Validation Data



HeLa cells were subjected to SDS PAGE followed by western blot with 18941-1-AP (LSM7 antibody) at dilution of 1:1000 incubated at room temperature for 1.5 hours.



Immunohistochemical analysis of paraffin-embedded human lymphoma using 18941-1-AP (LSM7 antibody) at dilution of 1:50 (under 10x lens).