

For Research Use Only

BMP15 Polyclonal antibody

Catalog Number: 18982-1-AP

7 Publications



Basic Information

Catalog Number:

18982-1-AP

Size:

150ul, Concentration: 280 ug/ml by Bradford method using BSA as the standard;

Source:

Rabbit

Isotype:

IgG

GenBank Accession Number:

NM_005448

GeneID (NCBI):

9210

UNIPROT ID:

O95972

Full Name:

bone morphogenetic protein 15

Calculated MW:

45 kDa

Observed MW:

50 kDa

Purification Method:

Antigen affinity purification

Recommended Dilutions:

WB 1:500-1:1000

IHC 1:50-1:500

Applications

Tested Applications:

WB, IHC, ELISA

Cited Applications:

WB, IHC, IF, CoIP

Species Specificity:

human

Cited Species:

human, mouse

Positive Controls:

WB : HeLa cells,

IHC : human prostate cancer tissue,

Note-IHC: suggested antigen retrieval with TE buffer pH 9.0; (*) Alternatively, antigen retrieval may be performed with citrate buffer pH 6.0

Background Information

BMP15, also named as GDF9B, is a member of the bone morphogenetic protein family which is part of the transforming growth factor beta superfamily. The transforming growth factor beta superfamily includes large families of growth and differentiation factors. BMP15 may be involved follicular development and oocyte-specific growth/differentiation factor that stimulates folliculogenesis and granulosa cell (GC) growth. Mutation of BMP15 will cause of ovarian dysgenesis type 2 (ODG2) and premature ovarian failure type 4 (POF4).

Notable Publications

Author	Pubmed ID	Journal	Application
Xiangrong Cui	28983616	Mol Med Rep	WB
Si-Yao Cheng	39672454	Food Chem Toxicol	WB
Yue-Cen Liu	39082229	Environ Toxicol	WB

Storage

Storage:

Store at -20°C. Stable for one year after shipment.

Storage Buffer:

PBS with 0.02% sodium azide and 50% glycerol pH 7.3.

Aliquoting is unnecessary for -20°C storage

*** 20ul sizes contain 0.1% BSA

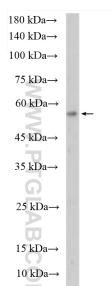
For technical support and original validation data for this product please contact:

T: 1 (888) 4PTGLAB (1-888-478-4522) (toll free in USA), or 1(312) 455-8498 (outside USA)

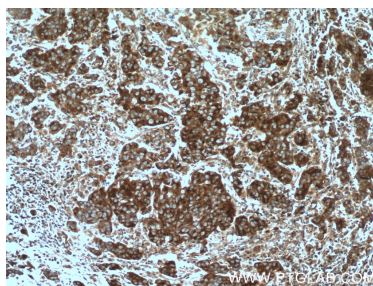
E: proteintech@ptglab.com
W: ptglab.com

This product is exclusively available under Proteintech Group brand and is not available to purchase from any other manufacturer.

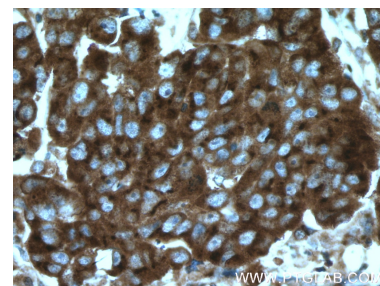
Selected Validation Data



HeLa cells were subjected to SDS PAGE followed by western blot with 18982-1-AP (BMP15 antibody) at dilution of 1:600 incubated at room temperature for 1.5 hours.



Immunohistochemical analysis of paraffin-embedded human prostate cancer tissue slide using 18982-1-AP (BMP15 antibody) at dilution of 1:200 (under 10x lens. Heat mediated antigen retrieval with Tris-EDTA buffer (pH 9.0).



Immunohistochemical analysis of paraffin-embedded human prostate cancer tissue slide using 18982-1-AP (BMP15 antibody) at dilution of 1:200 (under 40x lens. Heat mediated antigen retrieval with Tris-EDTA buffer (pH 9.0).