

For Research Use Only

# SLC24A4 Polyclonal antibody

Catalog Number: 18992-1-AP

Featured Product

5 Publications



## Basic Information

### Catalog Number:

18992-1-AP

### Size:

150ul, Concentration: 600 ug/ml by Nanodrop;

### Source:

Rabbit

### Isotype:

IgG

### GenBank Accession Number:

NM\_153646

### GeneID (NCBI):

123041

### UNIPROT ID:

Q8NFF2

### Full Name:

solute carrier family 24 (sodium/potassium/calcium exchanger), member 4

### Calculated MW:

69 kDa

### Observed MW:

62-90 kDa

### Purification Method:

Antigen affinity purification

### Recommended Dilutions:

WB 1:2000-1:16000

IHC 1:50-1:500

IF-P 1:50-1:500

## Applications

### Tested Applications:

WB, IHC, IF-P, ELISA

### Cited Applications:

WB, IHC

### Species Specificity:

human, mouse

### Cited Species:

human, mouse, rat

**Note-IHC: suggested antigen retrieval with TE buffer pH 9.0; (\*) Alternatively, antigen retrieval may be performed with citrate buffer pH 6.0**

### Positive Controls:

WB: mouse brain tissue, HeLa cells, mouse heart tissue

IHC: mouse brain tissue, human heart tissue

IF-P: mouse eye tissue,

## Background Information

SLC24A4, also named as NCKX4, belongs to the sodium/potassium/calcium exchanger family. SLC24A4 transports 1 Ca<sup>2+</sup> and 1 K<sup>+</sup> in exchange for 4 Na<sup>+</sup>. Genetic variations in SLC24A4 are associated with skin/hair/eye pigmentation type 6 (SHEP6).

## Notable Publications

Author	Pubmed ID	Journal	Application
Akane Inoue	34592494	Bone	IHC
A L J J Bronckers	27752731	Calcif Tissue Int	WB
Lacruz Rodrigo S RS	21809343	J Cell Physiol	WB

## Storage

### Storage:

Store at -20°C. Stable for one year after shipment.

### Storage Buffer:

PBS with 0.02% sodium azide and 50% glycerol pH 7.3.

Aliquoting is unnecessary for -20°C storage

\*\*\* 20ul sizes contain 0.1% BSA

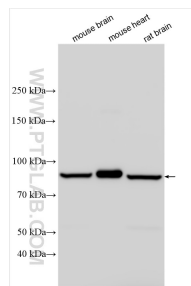
For technical support and original validation data for this product please contact:

T: 1 (888) 4PTGLAB (1-888-478-4522) (toll free in USA), or 1(312) 455-8498 (outside USA)

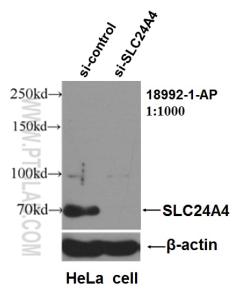
E: [proteintech@ptglab.com](mailto:proteintech@ptglab.com)  
W: [ptglab.com](http://ptglab.com)

This product is exclusively available under Proteintech Group brand and is not available to purchase from any other manufacturer.

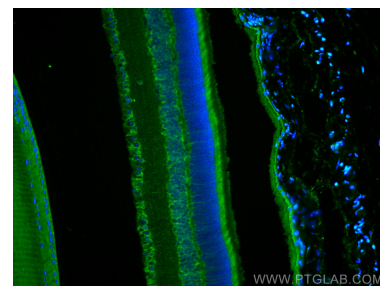
## Selected Validation Data



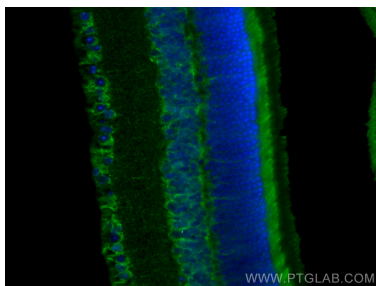
Various lysates were subjected to SDS PAGE followed by western blot with 18992-1-AP (SLC24A4 antibody) at dilution of 1:8000 incubated at room temperature for 1.5 hours.



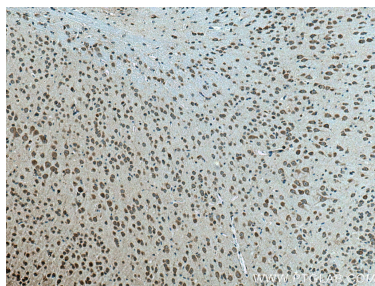
WB result of SLC24A4 antibody (18992-1-AP, 1:1000) with si-Control and si-SLC24A4 transfected HeLa cells.



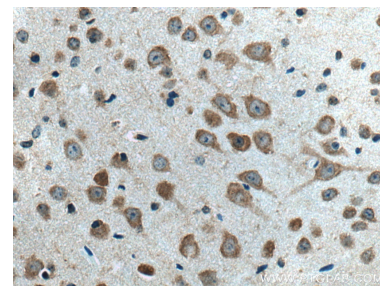
Immunofluorescent analysis of (4% PFA) fixed mouse eye tissue using SLC24A4 antibody (18992-1-AP) at dilution of 1:200 and CoraLite®488-Conjugated Goat Anti-Rabbit IgG(H+L).



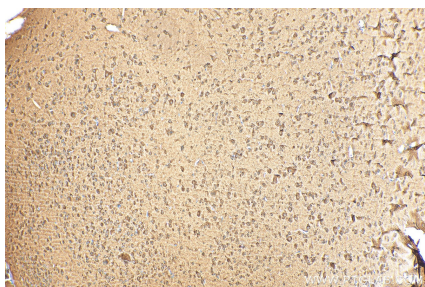
Immunofluorescent analysis of (4% PFA) fixed mouse eye tissue using SLC24A4 antibody (18992-1-AP) at dilution of 1:200 and CoraLite®488-Conjugated Goat Anti-Rabbit IgG(H+L).



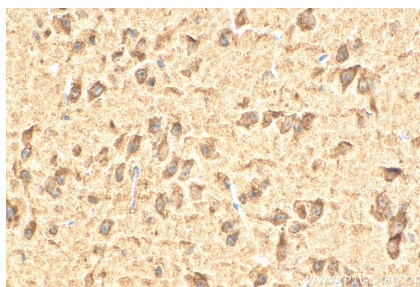
Immunohistochemical analysis of paraffin-embedded mouse brain tissue slide using 18992-1-AP (SLC24A4 antibody) at dilution of 1:200 (under 10x lens). Heat mediated antigen retrieval with Tris-EDTA buffer (pH 9.0).



Immunohistochemical analysis of paraffin-embedded mouse brain tissue slide using 18992-1-AP (SLC24A4 antibody) at dilution of 1:200 (under 40x lens). Heat mediated antigen retrieval with Tris-EDTA buffer (pH 9.0).



Immunohistochemical analysis of paraffin-embedded mouse brain tissue slide using 18992-1-AP (SLC24A4 antibody) at dilution of 1:200 (under 10x lens). Heat mediated antigen retrieval with Tris-EDTA buffer (pH 9.0).



Immunohistochemical analysis of paraffin-embedded mouse brain tissue slide using 18992-1-AP (SLC24A4 antibody) at dilution of 1:200 (under 40x lens). Heat mediated antigen retrieval with Tris-EDTA buffer (pH 9.0).