

For Research Use Only

ZFP36L2 Polyclonal antibody

Catalog Number: 19005-1-AP

3 Publications



Basic Information

Catalog Number:

19005-1-AP

Size:

150ul, Concentration: 350 µg/ml by Nanodrop and 153 µg/ml by Bradford method using BSA as the standard;

Source:

Rabbit

Isotype:

IgG

Immunogen Catalog Number:

AG13518

GenBank Accession Number:

BC005010

GeneID (NCBI):

678

UNIPROT ID:

P47974

Full Name:

zinc finger protein 36, C3H type-like 2

Calculated MW:

51 kDa

Observed MW:

51 kDa, 60 kDa

Purification Method:

Antigen affinity purification

Recommended Dilutions:

WB 1:500-1:1000

IHC 1:50-1:500

Applications

Tested Applications:

WB, IHC, ELISA

Cited Applications:

WB

Species Specificity:

human, mouse, rat

Cited Species:

human, mouse, zebrafish

Note-IHC: suggested antigen retrieval with TE buffer pH 9.0; (*) Alternatively, antigen retrieval may be performed with citrate buffer pH 6.0

Positive Controls:

WB : HepG2 cells, HL-60 cells

IHC : human skin cancer tissue, human pancreas cancer tissue

Notable Publications

Author	Pubmed ID	Journal	Application
Min Zhou	35910229	Front Genet	WB
Bin Wang	38604490	Biochim Biophys Acta Mol Basis Dis	WB
Jialin Sun	38321215	J Hum Genet	WB

Storage

Storage:

Store at -20°C. Stable for one year after shipment.

Storage Buffer:

PBS with 0.02% sodium azide and 50% glycerol pH 7.3.

Aliquoting is unnecessary for -20°C storage

*** 20ul sizes contain 0.1% BSA

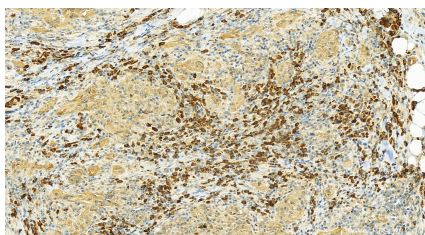
For technical support and original validation data for this product please contact:

T: 1 (888) 4PTGLAB (1-888-478-4522) (toll free in USA), or 1(312) 455-8498 (outside USA)

E: proteintech@ptglab.com
W: ptglab.com

This product is exclusively available under Proteintech Group brand and is not available to purchase from any other manufacturer.

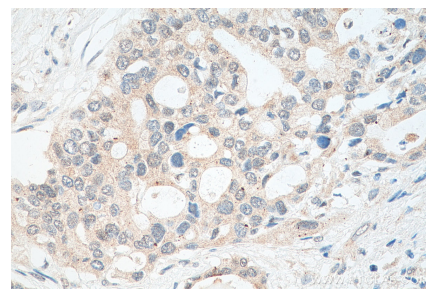
Selected Validation Data



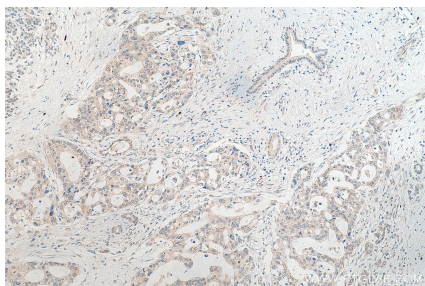
Immunohistochemical analysis of paraffin-embedded skin cancer slide using 19005-1-AP (ZFP36L2 antibody) at dilution of 1:100 (under 20x lens). Heat mediated antigen retrieval with Tris-EDTA buffer (pH 9.0).



HepG2 cells were subjected to SDS PAGE followed by western blot with 19005-1-AP (ZFP36L2 antibody) at dilution of 1:500 incubated at room temperature for 1.5 hours.



Immunohistochemical analysis of paraffin-embedded human pancreas cancer tissue slide using 19005-1-AP (ZFP36L2 antibody) at dilution of 1:100 (under 40x lens). Heat mediated antigen retrieval with Tris-EDTA buffer (pH 9.0).



Immunohistochemical analysis of paraffin-embedded human pancreas cancer tissue slide using 19005-1-AP (ZFP36L2 antibody) at dilution of 1:100 (under 10x lens). Heat mediated antigen retrieval with Tris-EDTA buffer (pH 9.0).