

For Research Use Only

PIF1 Polyclonal antibody

Catalog Number: 19006-1-AP

1 Publications



Basic Information

Catalog Number:

19006-1-AP

Size:

150ul, Concentration: 750 ug/ml by Nanodrop and 327 ug/ml by Bradford method using BSA as the standard;

Source:

Rabbit

Isotype:

IgG

Immunogen Catalog Number:

AG13522

GenBank Accession Number:

BC018978

GeneID (NCBI):

80119

UNIPROT ID:

Q9H611

Full Name:

PIF1 5'-to-3' DNA helicase homolog (S. cerevisiae)

Calculated MW:

70 kDa

Observed MW:

63-73 kDa

Purification Method:

Antigen affinity purification

Recommended Dilutions:

WB 1:500-1:1000

Applications

Tested Applications:

WB, ELISA

Cited Applications:

WB

Species Specificity:

human, mouse

Cited Species:

human

Positive Controls:

WB : mouse thymus tissue,

Background Information

PIF1, also named as ATP-dependent DNA helicase PIF1, is a 641 amino acid protein, which belongs to the helicase family. PIF1 as a DNA-dependent ATPase and 5'-3' DNA helicase is required for the maintenance of both mitochondrial and nuclear genome stability. PIF1 localizes in the nucleus and is involved in the maintenance of telomeric DNA. PIF1 exists as four isoforms. isoform 1 is a 70 kDa protein and isoform 2 is 63 kDa protein.

Notable Publications

Author	Pubmed ID	Journal	Application
Ting Zhang	35190532	Cell Death Dis	WB

Storage

Storage:

Store at -20°C. Stable for one year after shipment.

Storage Buffer:

PBS with 0.02% sodium azide and 50% glycerol pH 7.3.

Aliquoting is unnecessary for -20°C storage

*** 20ul sizes contain 0.1% BSA

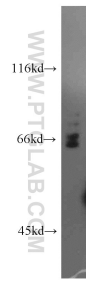
For technical support and original validation data for this product please contact:

T: 1 (888) 4PTGLAB (1-888-478-4522) (toll free in USA), or 1(312) 455-8498 (outside USA)

E: proteintech@ptglab.com
W: ptglab.com

This product is exclusively available under Proteintech Group brand and is not available to purchase from any other manufacturer.

Selected Validation Data



mouse thymus tissue were subjected to SDS PAGE followed by western blot with 19006-1-AP (PIF1 antibody) at dilution of 1:800 incubated at room temperature for 1.5 hours.