

For Research Use Only

DPP7 Polyclonal antibody

Catalog Number: 19018-1-AP

1 Publications



Basic Information

Catalog Number:

19018-1-AP

Size:

150ul, Concentration: 200 ug/ml by Nanodrop and 133 ug/ml by Bradford method using BSA as the standard;

Source:

Rabbit

Isotype:

IgG

Immunogen Catalog Number:

AG13556

GenBank Accession Number:

BC016961

GeneID (NCBI):

29952

UNIPROT ID:

Q9UHL4

Full Name:

dipeptidyl-peptidase 7

Calculated MW:

54 kDa

Observed MW:

54 kDa

Purification Method:

Antigen affinity purification

Recommended Dilutions:

WB 1:500-1:2000

IHC 1:200-1:800

Applications

Tested Applications:

WB, IHC, ELISA

Cited Applications:

WB

Species Specificity:

human, mouse, rat

Cited Species:

human

Note-IHC: suggested antigen retrieval with TE buffer pH 9.0; (*) Alternatively, antigen retrieval may be performed with citrate buffer pH 6.0

Positive Controls:

WB: U-937 cells, mouse skeletal muscle tissue, rat skeletal muscle tissue

IHC: human ovary cancer tissue,

Background Information

DPP7 (also known as DPP-II and quiescent cell proline dipeptidase, QPP), is the first reported protease that contains a leucine zipper motif through which the functional homodimer has been predicted to be formed (PMID: 22952628). DPP7 can be detected as 54 kDa (full length) and ~50 kDa (signal peptide cleaved).

Notable Publications

Author	Pubmed ID	Journal	Application
Alexander Schepsky	32717133	Cancer Med	WB

Storage

Storage:

Store at -20°C. Stable for one year after shipment.

Storage Buffer:

PBS with 0.02% sodium azide and 50% glycerol pH 7.3.

Aliquoting is unnecessary for -20°C storage

*** 20ul sizes contain 0.1% BSA

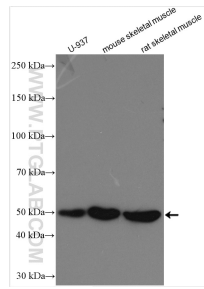
For technical support and original validation data for this product please contact:

T: 1 (888) 4PTGLAB (1-888-478-4522) (toll free in USA), or 1(312) 455-8498 (outside USA)

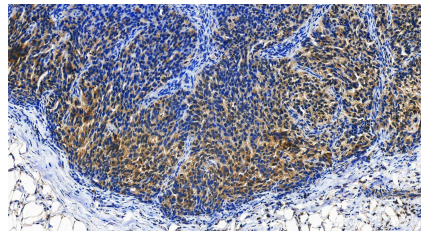
E: proteintech@ptglab.com
W: ptglab.com

This product is exclusively available under Proteintech Group brand and is not available to purchase from any other manufacturer.

Selected Validation Data



Various lysates were subjected to SDS PAGE followed by western blot with 19018-1-AP (DPP7 antibody) at dilution of 1:1000 incubated at room temperature for 1.5 hours.



Immunohistochemical analysis of paraffin-embedded human ovary cancer tissue slide using 19018-1-AP (DPP7 antibody) at dilution of 1:400 (under 20x lens). Heat mediated antigen retrieval with Tris-EDTA buffer (pH 9.0).