

For Research Use Only

MDM2 Polyclonal antibody

Catalog Number: 19058-1-AP

Featured Product

51 Publications



Basic Information

Catalog Number:

19058-1-AP

Size:

150ul, Concentration: 300 µg/ml by Bradford method using BSA as the standard;

Source:

Rabbit

Isotype:

IgG

GenBank Accession Number:

NM_002392

GeneID (NCBI):

4193

UNIPROT ID:

Q00987

Full Name:

Mdm2 p53 binding protein homolog (mouse)

Calculated MW:

55 kDa

Observed MW:

30-55 kDa, 60-100 kDa

Purification Method:

Antigen affinity purification

Recommended Dilutions:

WB 1:200-1:1000

Applications

Tested Applications:

WB, ELISA

Cited Applications:

WB, IHC, IF, IP, COIP

Species Specificity:

human, mouse, rat

Cited Species:

human, mouse, rat, artemia sinica

Positive Controls:

WB: A431 cells,

Background Information

MDM2, also known as HDM2, is a protein of the E3 ubiquitin-ligase family. MDM2 is recognized as a proto-oncogene and is over-expressed in a wide range of human malignancies including soft tissue carcinomas and breast cancer. MDM2 can bind to the p53 tumor suppressor protein with high affinity, and negatively regulates p53 by mediating its ubiquitination and proteosomal degradation (PMID: 17000718). MDM2 has some isoforms with calculated molecular mass of 25-55kD, and can be detected as 90-97kD. In addition to full length MDM2, two lower bands (85kD and 75kD) are often observed which are likely to be produced by translation initiation at methionine codons 50 and 60. Another isoform of MDM2 is often observed as 57-60kD in cell lines which is indeed a caspase cleavage product of MDM2 at residue 361 (PMID: 19565011, 9840926, 7689721).

Notable Publications

Author	Pubmed ID	Journal	Application
Qian Wang	31839745	Int J Med Sci	WB
Shuai Li	31626714	FEBS Lett	WB,IP
Yafei Guo	34650049	Cell Death Dis	WB

Storage

Storage:

Store at -20°C. Stable for one year after shipment.

Storage Buffer:

PBS with 0.02% sodium azide and 50% glycerol pH 7.3.

Aliquoting is unnecessary for -20°C storage

*** 20ul sizes contain 0.1% BSA

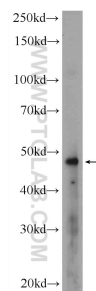
For technical support and original validation data for this product please contact:

T: 1 (888) 4PTGLAB (1-888-478-4522) (toll free in USA), or 1(312) 455-8498 (outside USA)

E: proteintech@ptglab.com
W: ptglab.com

This product is exclusively available under Proteintech Group brand and is not available to purchase from any other manufacturer.

Selected Validation Data



A431 cells were subjected to SDS PAGE followed by western blot with 19058-1-AP (MDM2 Antibody) at dilution of 1:300 incubated at 4 degree celsius over night.