

For Research Use Only

CREBZF Polyclonal antibody

Catalog Number: 19070-1-AP



Basic Information

Catalog Number: 19070-1-AP	GenBank Accession Number: BC093796	Purification Method: Antigen affinity purification
Size: 150ul , Concentration: 600 µg/ml by Nanodrop;	GeneID (NCBI): 58487	Recommended Dilutions: WB 1:500-1:2000
Source: Rabbit	Full Name: CREB/ATF bZIP transcription factor	
Isotype: IgG	Calculated MW: 272 aa, 30 kDa	
Immunogen Catalog Number: AG13625	Observed MW: 30 kDa	

Applications

Tested Applications: WB, ELISA	Positive Controls: WB : mouse kidney tissue, mouse liver tissue, mouse ovary tissue
Species Specificity: mouse	

Background Information

CREBZF is a basic region-leucine zipper (bZIP) transcription factor that belongs to the cAMP-response-element-binding protein (CREB)/activating transcription factor (ATF) family. CREBZF gene expression produces two isoforms, CREBZF-L (long isoform of CREBZF, also known as SMILE) and CREBZF-S (short isoform of CREBZF, also known as Zhangfei), resulting from alternative initiation codons. CREBZF fulfills its role in transcriptional regulation by heterodimerizing with other transcription factors as a coregulator and then binding to target promoters and regulating downstream gene expression. CREBZF has been identified as a novel transcriptional coregulator of a variety of nuclear receptors (PMID: 31124138).

Storage

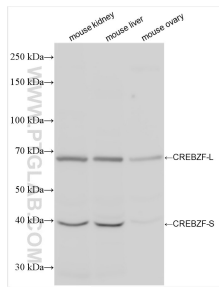
Storage:
Store at -20°C. Stable for one year after shipment.
Storage Buffer:
PBS with 0.02% sodium azide and 50% glycerol pH 7.3.
Aliquoting is unnecessary for -20°C storage

*** 20ul sizes contain 0.1% BSA

For technical support and original validation data for this product please contact:
T: 1 (888) 4PTGLAB (1-888-478-4522) (toll free in USA), or 1(312) 455-8498 (outside USA)
E: proteintech@ptglab.com
W: ptglab.com

This product is exclusively available under Proteintech Group brand and is not available to purchase from any other manufacturer.

Selected Validation Data



Various lysates were subjected to SDS PAGE followed by western blot with 19070-1-AP (CREBZF antibody) at dilution of 1:1000 incubated at room temperature for 1.5 hours.