

For Research Use Only

Polycystin 2 Polyclonal antibody

Catalog Number: 19126-1-AP

9 Publications



Basic Information

Catalog Number:

19126-1-AP

Size:

150ul, Concentration: 400 ug/ml by Nanodrop;

Source:

Rabbit

Isotype:

IgG

GenBank Accession Number:

NM_000297

GeneID (NCBI):

5311

UNIPROT ID:

Q13563

Full Name:

polycystic kidney disease 2 (autosomal dominant)

Calculated MW:

110 kDa

Observed MW:

109 kDa

Purification Method:

Antigen affinity purification

Recommended Dilutions:

WB: 1:2000-1:16000

IP: 0.5-4.0 ug for 1.0-3.0 mg of total protein lysate

IHC: 1:20-1:200

Applications

Tested Applications:

WB, IHC, IP, ELISA

Cited Applications:

WB, IHC, IF

Species Specificity:

human, mouse, rat, canine

Cited Species:

human, mouse, rat

Positive Controls:

WB: mouse kidney tissue, HEK-293 cells, human kidney tissue

IP: mouse testis tissue,

IHC: human kidney tissue,

Note-IHC: suggested antigen retrieval with TE buffer pH 9.0; (*) Alternatively, antigen retrieval may be performed with citrate buffer pH 6.0

Background Information

Polycystin 2 (PKD2), the product of the gene mutated in type 2 autosomal dominant polycystic kidney disease, belongs to the polycystin family. PKD2 is a ~110-kDa six-transmembrane channel protein with cytoplasmic N- and C-termini. This protein functions as a Ca²⁺-activated intracellular Ca²⁺ release channel in the endoplasmic reticulum. It is also present in the plasma membrane, where it functions as a nonselective cation channel. In addition, PKD2 expression has been documented in the primary cilium of kidney epithelial cells, where it is believed to have an essential role in mediating Ca²⁺ entry in response to flow rate changes, suggesting that it may be part of a mechanosensing machinery residing in the primary cilium. (PMID: 16135816; 10497221)

Notable Publications

Author	Pubmed ID	Journal	Application
Xiaomei Liu	29130966	Cell Physiol Biochem	WB
Jian-Gang Ren	28552828	Hum Pathol	IHC
Xin Hou	34307458	Front Mol Biosci	WB

Storage

Storage:

Store at -20°C. Stable for one year after shipment.

Storage Buffer:

PBS with 0.02% sodium azide and 50% glycerol, pH7.3

Aliquoting is unnecessary for -20°C storage

*** 20ul sizes contain 0.1% BSA

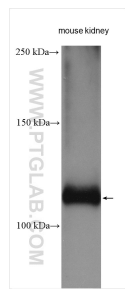
For technical support and original validation data for this product please contact:

T: 1 (888) 4PTGLAB (1-888-478-4522) (toll free in USA), or 1(312) 455-8498 (outside USA)

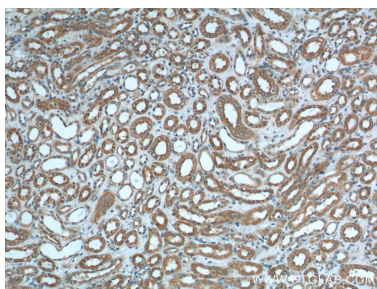
E: proteintech@ptglab.com
W: ptglab.com

This product is exclusively available under Proteintech Group brand and is not available to purchase from any other manufacturer.

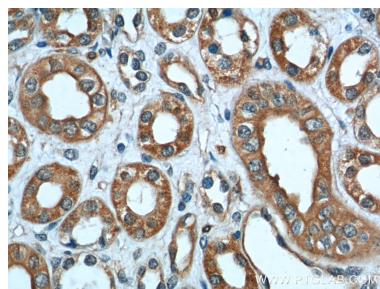
Selected Validation Data



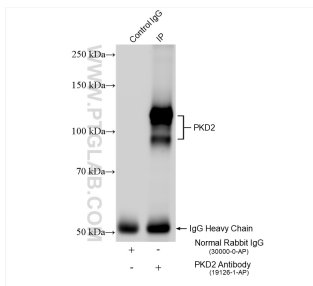
mouse kidney tissue were subjected to SDS PAGE followed by western blot with 19126-1-AP (Polycystin 2 antibody) at dilution of 1:8000 incubated at room temperature for 1.5 hours.



Immunohistochemical analysis of paraffin-embedded human kidney tissue slide using 19126-1-AP (Polycystin 2 antibody at dilution of 1:200 (under 10x lens).



Immunohistochemical analysis of paraffin-embedded human kidney tissue slide using 19126-1-AP (Polycystin 2 antibody at dilution of 1:200 (under 40x lens).



IP result of anti-Polycystin 2 (IP:19126-1-AP, 4ug; Detection:19126-1-AP 1:500) with mouse testis tissue lysate 1120 ug.