

For Research Use Only

# PKC Delta Polyclonal antibody

Catalog Number: 19132-1-AP

Featured Product

8 Publications



## Basic Information

### Catalog Number:

19132-1-AP

### Size:

150ul, Concentration: 200 ug/ml by Nanodrop and 193 ug/ml by Bradford method using BSA as the standard;

### Source:

Rabbit

### Isotype:

IgG

### Immunogen Catalog Number:

AG5631

### GenBank Accession Number:

BC043350

### GeneID (NCBI):

5580

### UNIPROT ID:

Q05655

### Full Name:

protein kinase C, delta

### Calculated MW:

78 kDa

### Observed MW:

70 kDa

### Purification Method:

Antigen affinity purification

### Recommended Dilutions:

WB: 1:500-1:2000

IP: 0.5-4.0 ug for 1.0-3.0 mg of total protein lysate

IHC: 1:50-1:500

IF/ICC: 1:200-1:800

FC (Intra): 0.40 ug per 10<sup>6</sup> cells in a 100 µl suspension

## Applications

### Tested Applications:

WB, IHC, IF/ICC, FC (Intra), IP, ELISA

### Cited Applications:

WB, IHC, IF, IP, CoIP

### Species Specificity:

human, mouse, rat

### Cited Species:

human, mouse, rat

**Note-IHC: suggested antigen retrieval with TE buffer pH 9.0; (\*) Alternatively, antigen retrieval may be performed with citrate buffer pH 6.0**

### Positive Controls:

WB: A431 cells, Jurkat cells, MCF-7 cells, HT-1080 cells, mouse colon tissue, HUVEC cells

IP: A431 cells,

IHC: human brain tissue, human colon tissue

IF/ICC: U2OS cells, U-251 cells, HeLa cells, A431 cells

FC (Intra): HeLa cells,

## Notable Publications

Author	Pubmed ID	Journal	Application
Houbao Qi	31707260	iScience	WB
Katarzyna Dąbrowska	30017230	Neurochem Int	WB
Zhong-Wen Chang	35122947	Fish Shellfish Immunol	WB

## Storage

### Storage:

Store at -20°C. Stable for one year after shipment.

### Storage Buffer:

PBS with 0.02% sodium azide and 50% glycerol, pH7.3

Aliquoting is unnecessary for -20°C storage

\*\*\* 20ul sizes contain 0.1% BSA

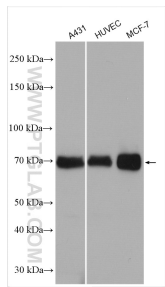
For technical support and original validation data for this product please contact:

T: 1 (888) 4PTGLAB (1-888-478-4522) (toll free in USA), or 1(312) 455-8498 (outside USA)

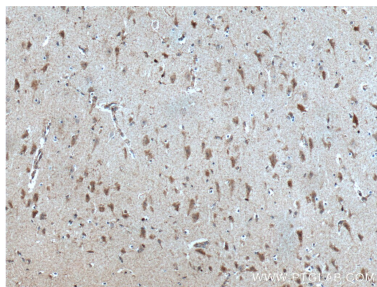
E: [proteintech@ptglab.com](mailto:proteintech@ptglab.com)  
W: [ptglab.com](http://ptglab.com)

This product is exclusively available under Proteintech Group brand and is not available to purchase from any other manufacturer.

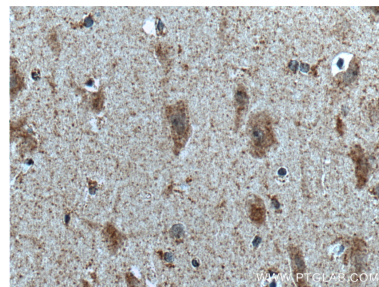
Selected Validation Data



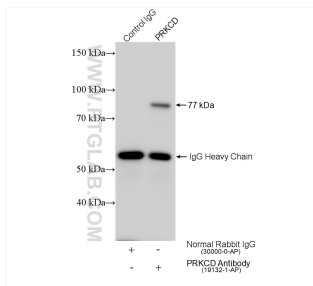
Various lysates were subjected to SDS PAGE followed by western blot with 19132-1-AP (PKC Delta antibody) at dilution of 1:1000 incubated at room temperature for 1.5 hours.



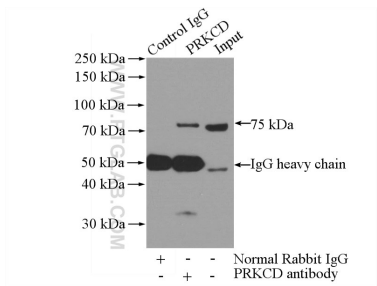
Immunohistochemical analysis of paraffin-embedded human brain tissue slide using 19132-1-AP (PKC delta antibody) at dilution of 1:200 (under 10x lens). Heat mediated antigen retrieval with Tris-EDTA buffer (pH 9.0).



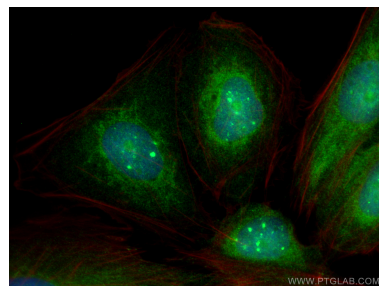
Immunohistochemical analysis of paraffin-embedded human brain tissue slide using 19132-1-AP (PKC delta antibody) at dilution of 1:200 (under 40x lens). Heat mediated antigen retrieval with Tris-EDTA buffer (pH 9.0).



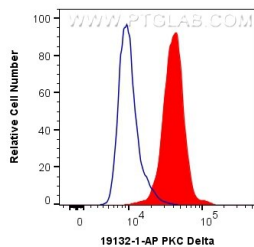
IP result of anti-PKC Delta (IP:19132-1-AP, 4ug; Detection:19132-1-AP 1:800) with A431 cells lysate 2640 ug.



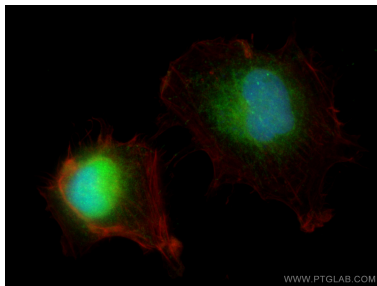
IP result of anti-PKC Delta (IP:19132-1-AP, 4ug; Detection:19132-1-AP 1:500) with A431 cells lysate 2000ug.



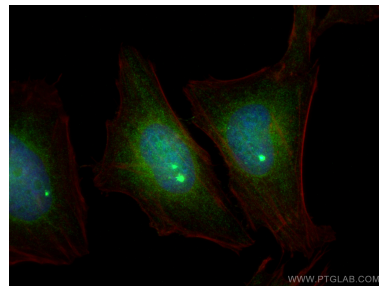
Immunofluorescent analysis of (4% PFA) fixed U2OS cells using PKC Delta antibody (19132-1-AP) at dilution of 1:400 and CoraLite®488-Conjugated Goat Anti-Rabbit IgG(H+L), CL594-Phalloidin (red).



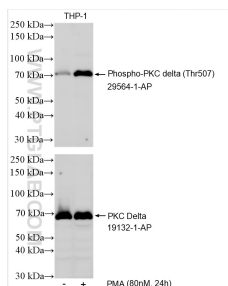
1X10<sup>6</sup> HeLa cells were intracellularly stained with 0.4 ug Anti-Human PKC Delta (19132-1-AP) and CoraLite®488-Conjugated Goat Anti-Rabbit IgG(H+L) at dilution 1:1000 (red), or 0.4 ug Control Antibody. Cells were fixed with 4% PFA and permeabilized with Flow Cytometry Perm Buffer (PF00011-C).



Immunofluorescent analysis of (4% PFA) fixed U-251 cells using PKC Delta antibody (19132-1-AP) at dilution of 1:400 and CoraLite®488-Conjugated Goat Anti-Rabbit IgG(H+L), CL594-Phalloidin (red).



Immunofluorescent analysis of (4% PFA) fixed HeLa cells using PKC Delta antibody (19132-1-AP) at dilution of 1:400 and CoraLite®488-Conjugated Goat Anti-Rabbit IgG(H+L), CL594-Phalloidin (red).



Non-treated and PMA treated THP-1 cells were subjected to SDS PAGE followed by western blot with 29564-1-AP (Phospho-PKC delta (Thr507) antibody) at dilution of 1:500 incubated at room temperature for 1.5 hours. The membrane was stripped and re-blotted with PKC Delta antibody (19132-1-AP) subsequently.