

For Research Use Only

# ATN1 Polyclonal antibody

Catalog Number: 19243-1-AP



## Basic Information

<b>Catalog Number:</b> 19243-1-AP	<b>GenBank Accession Number:</b> BC051795	<b>Purification Method:</b> Antigen affinity purification
<b>Size:</b> 150ul , Concentration: 260 ug/ml by Nanodrop and 227 ug/ml by Bradford method using BSA as the standard;	<b>GeneID (NCBI):</b> 1822	<b>Recommended Dilutions:</b> WB 1:200-1:1000 IHC 1:20-1:200
<b>Source:</b> Rabbit	<b>UNIPROT ID:</b> P54259	
<b>Isotype:</b> IgG	<b>Full Name:</b> atrophin 1	
<b>Immunogen Catalog Number:</b> AG5835	<b>Calculated MW:</b> 125 kDa	
	<b>Observed MW:</b> 105-110 kDa	

## Applications

<b>Tested Applications:</b> WB, IHC, ELISA	<b>Positive Controls:</b>
<b>Species Specificity:</b> human, mouse	<b>WB :</b> mouse testis tissue,
<b>Note-IHC:</b> suggested antigen retrieval with <b>TE buffer pH 9.0; (*) Alternatively, antigen retrieval may be performed with citrate buffer pH 6.0</b>	<b>IHC :</b> human ovary tissue, human testis tissue

## Background Information

ATN1 also known as Atrophin-1 is a protein that in humans is encoded by the ATN1 gene. Dentatorubral pallidoluysian atrophy is a rare neurodegenerative disorder characterized by cerebellar ataxia, myoclonic epilepsy, choreoathetosis, and dementia. The disorder is related to the expansion of a trinucleotide repeat within this gene. The encoded protein includes a serine repeat and a region of alternating acidic and basic amino acids, as well as the variable glutamine repeat.

## Storage

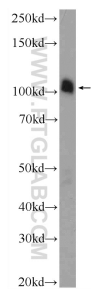
**Storage:**  
Store at -20°C. Stable for one year after shipment.  
**Storage Buffer:**  
PBS with 0.02% sodium azide and 50% glycerol pH 7.3.  
**Aliquoting is unnecessary for -20°C storage**

\*\*\* 20ul sizes contain 0.1% BSA

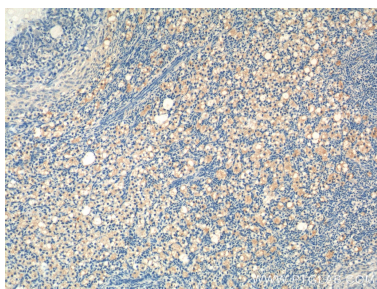
For technical support and original validation data for this product please contact:  
T: 1 (888) 4PTGLAB (1-888-478-4522) (toll free in USA), or 1(312) 455-8498 (outside USA)  
E: [proteintech@ptglab.com](mailto:proteintech@ptglab.com)  
W: [ptglab.com](http://ptglab.com)

This product is exclusively available under Proteintech Group brand and is not available to purchase from any other manufacturer.

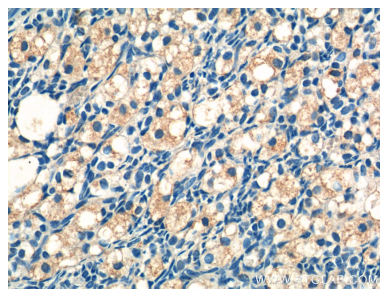
Selected Validation Data



mouse testis tissue were subjected to SDS PAGE followed by western blot with 19243-1-AP (ATN1 Antibody) at dilution of 1:300 incubated at room temperature for 1.5 hours.



Immunohistochemical analysis of paraffin-embedded human ovary tissue slide using 19243-1-AP (ATN1 Antibody) at dilution of 1:50 (under 10x lens).



Immunohistochemical analysis of paraffin-embedded human ovary tissue slide using 19243-1-AP (ATN1 Antibody) at dilution of 1:50 (under 40x lens).