

For Research Use Only

COSMC Polyclonal antibody

Catalog Number: 19254-1-AP

Featured Product

6 Publications



Basic Information

Catalog Number: 19254-1-AP	GenBank Accession Number: BC050441	Purification Method: Antigen affinity purification
Size: 150ul , Concentration: 260 µg/ml by Nanodrop and 200 µg/ml by Bradford method using BSA as the standard;	GeneID (NCBI): 29071	Recommended Dilutions: WB 1:500-1:2000 IHC 1:50-1:500
Source: Rabbit	Full Name: C1GALT1-specific chaperone 1	
Isotype: IgG	Calculated MW: 36 kDa	
Immunogen Catalog Number: AG6899	Observed MW: 36-37 kDa	

Applications

Tested Applications: IHC, WB, ELISA	Positive Controls: WB : HeLa cells, HepG2 cells, Caco-2 cells
Cited Applications: IF, IHC, WB	IHC : human colon cancer tissue,
Species Specificity: human, mouse, rat	
Cited Species: human, mouse	

Note-IHC: suggested antigen retrieval with TE buffer pH 9.0; (*) Alternatively, antigen retrieval may be performed with citrate buffer pH 6.0

Background Information

COSMC (C1GALT1C1) is a molecular chaperone required for expression of active T-synthase (C1GALT1) which catalyzes the synthesis of Tn antigen. Tn antigens are cancer-associated glycans and play an important role in tumor progression. Dysfunctional COSMC is able to convert a wild type protein into a tumor-specific antigen affecting tumor cell biology. COSMC overexpression had been observed in various cancers. COSMC mutations have been observed in an autoimmune disease Tn syndrome.

Notable Publications

Author	Pubmed ID	Journal	Application
Ruisong Ding	34644263	Aging (Albany NY)	WB
Li Huang	33040455	Aging Cell	WB
Lin Luo	32683071	Respir Physiol Neurobiol	IHC

Storage

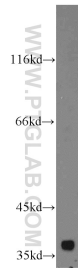
Storage:
Store at -20°C. Stable for one year after shipment.
Storage Buffer:
PBS with 0.02% sodium azide and 50% glycerol pH 7.3.
Aliquoting is unnecessary for -20°C storage

*** 20ul sizes contain 0.1% BSA

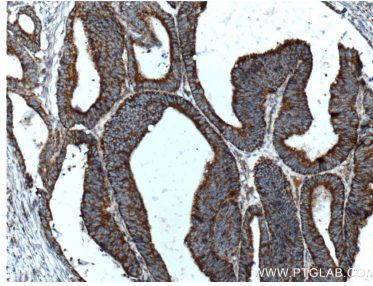
For technical support and original validation data for this product please contact:
T: 1 (888) 4PTGLAB (1-888-478-4522) (toll free in USA), or 1(312) 455-8498 (outside USA)
E: proteintech@ptglab.com
W: ptglab.com

This product is exclusively available under Proteintech Group brand and is not available to purchase from any other manufacturer.

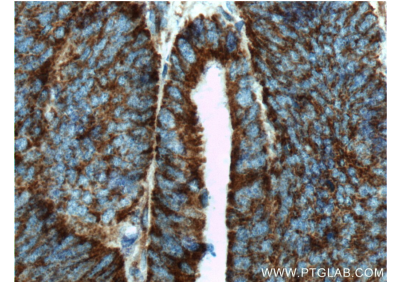
Selected Validation Data



HeLa cells were subjected to SDS PAGE followed by western blot with 19254-1-AP (COSMC antibody) at dilution of 1:800 incubated at room temperature for 1.5 hours.



Immunohistochemical analysis of paraffin-embedded human colon cancer tissue slide using 19254-1-AP (COSMC antibody at dilution of 1:200 (under 10x lens). Heat mediated antigen retrieval with Tris-EDTA buffer (pH 9.0).



Immunohistochemical analysis of paraffin-embedded human colon cancer tissue slide using 19254-1-AP (COSMC antibody at dilution of 1:200 (under 40x lens). Heat mediated antigen retrieval with Tris-EDTA buffer (pH 9.0).