

For Research Use Only

# CLCA2 Polyclonal antibody

Catalog Number: 19273-1-AP

4 Publications



## Basic Information

### Catalog Number:

19273-1-AP

### Size:

150ul, Concentration: 400 ug/ml by Nanodrop;

### Source:

Rabbit

### Isotype:

IgG

### Immunogen Catalog Number:

AG5914

### GenBank Accession Number:

BC041096

### GeneID (NCBI):

9635

### UNIPROT ID:

Q9UQC9

### Full Name:

chloride channel accessory 2

### Calculated MW:

104 kDa

### Observed MW:

141 kDa, 35-40 kDa

### Purification Method:

Antigen affinity purification

### Recommended Dilutions:

WB 1:500-1:1000

IHC 1:20-1:200

## Applications

### Tested Applications:

WB, IHC, ELISA

### Cited Applications:

WB, IP

### Species Specificity:

human, mouse

### Cited Species:

human, mouse

**Note-IHC: suggested antigen retrieval with TE buffer pH 9.0; (\*) Alternatively, antigen retrieval may be performed with citrate buffer pH 6.0**

### Positive Controls:

WB : mouse lung tissue, COLO 320 cells

IHC : human oesophagus tissue,

## Notable Publications

Author	Pubmed ID	Journal	Application
Tinghui Shao	34869368	Front Cell Dev Biol	WB,IP
Xinming Wang	34805326	Front Cardiovasc Med	WB
Yali Fan	38528613	J Ovarian Res	WB

## Storage

### Storage:

Store at -20°C. Stable for one year after shipment.

### Storage Buffer:

PBS with 0.02% sodium azide and 50% glycerol pH 7.3.

Aliquoting is unnecessary for -20°C storage

\*\*\* 20ul sizes contain 0.1% BSA

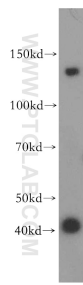
For technical support and original validation data for this product please contact:

T: 1 (888) 4PTGLAB (1-888-478-4522) (toll free in USA), or 1(312) 455-8498 (outside USA)

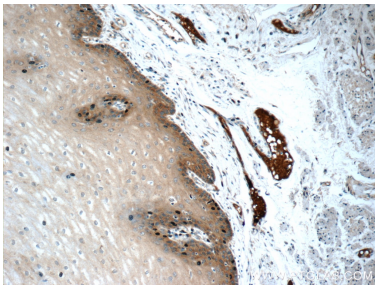
E: [proteintech@ptglab.com](mailto:proteintech@ptglab.com)  
W: [ptglab.com](http://ptglab.com)

This product is exclusively available under Proteintech Group brand and is not available to purchase from any other manufacturer.

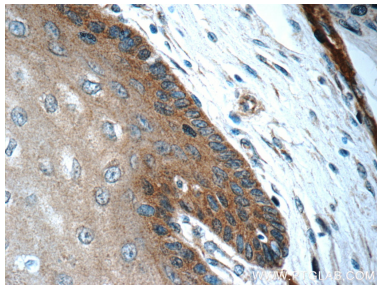
# Selected Validation Data



mouse lung tissue were subjected to SDS PAGE followed by western blot with 19273-1-AP (CLCA2 antibody) at dilution of 1:300 incubated at room temperature for 1.5 hours.



Immunohistochemical analysis of paraffin-embedded human oesophagus tissue slide using 19273-1-AP (CLCA2 Antibody) at dilution of 1:50 (under 10x lens).



Immunohistochemical analysis of paraffin-embedded human oesophagus tissue slide using 19273-1-AP (CLCA2 Antibody) at dilution of 1:50 (under 40x lens).