

For Research Use Only

# Gastroke 1 Polyclonal antibody

Catalog Number: 19344-1-AP

4 Publications



## Basic Information

### Catalog Number:

19344-1-AP

### Size:

150ul, Concentration: 450 ug/ml by Nanodrop and 433 ug/ml by Bradford method using BSA as the standard;

### Source:

Rabbit

### Isotype:

IgG

### Immunogen Catalog Number:

AG6091

### GenBank Accession Number:

BC059778

### GeneID (NCBI):

56287

### UNIPROT ID:

Q9NS71

### Full Name:

gastroke 1

### Calculated MW:

22 kDa

### Observed MW:

20-22 kDa

### Purification Method:

Antigen affinity purification

### Recommended Dilutions:

WB 1:1000-1:4000

IHC 1:20-1:200

## Applications

### Tested Applications:

WB, IHC, ELISA

### Cited Applications:

WB, IF, IHC, ELISA

### Species Specificity:

human, mouse

### Cited Species:

human, mouse

### Positive Controls:

WB : human stomach tissue, mouse stomach tissue

IHC : human stomach tissue,

**Note-IHC: suggested antigen retrieval with TE buffer pH 9.0; (\*) Alternatively, antigen retrieval may be performed with citrate buffer pH 6.0**

## Background Information

Gastroke 1 (GKN1), a stomach-specific protein also known as 18 kDa antrum mucosa protein (AMP-18) or foveolin, belongs to the gastroke family of gastric mucus cell-secreted proteins. The human GKN1 gene has been localized in a region of chromosome 2p13 of about 6 kb and contains 6 exons. GKN1 is expressed only in normal human stomach, but is absent from gastric adenocarcinomas, gastro-esophageal adenocarcinoma cell lines, and other normal and tumor gastro-intestinal tissues. GKN1 may play an important role in normal gastric function and may be a gastric tumour suppressor.

## Notable Publications

Author	Pubmed ID	Journal	Application
Yanlei Guo	31657090	Helicobacter	WB,IHC
Anne-Marie C Overstreet	33947892	Sci Rep	WB
Kewei Liu	38617533	Int J Biol Sci	WB,IF,ELISA

## Storage

### Storage:

Store at -20°C. Stable for one year after shipment.

### Storage Buffer:

PBS with 0.02% sodium azide and 50% glycerol pH 7.3.

Aliquoting is unnecessary for -20°C storage

\*\*\* 20ul sizes contain 0.1% BSA

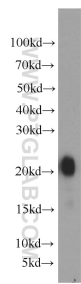
For technical support and original validation data for this product please contact:

T: 1 (888) 4PTGLAB (1-888-478-4522) (toll free in USA), or 1(312) 455-8498 (outside USA)

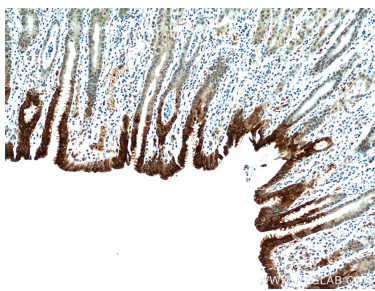
E: proteintech@ptglab.com  
W: ptglab.com

This product is exclusively available under Proteintech Group brand and is not available to purchase from any other manufacturer.

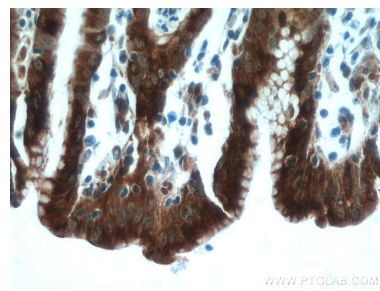
Selected Validation Data



human stomach tissue were subjected to SDS PAGE followed by western blot with 19344-1-AP (Gastrokine 1 antibody) at dilution of 1:2000 incubated at room temperature for 1.5 hours.



Immunohistochemical analysis of paraffin-embedded human stomach using 19344-1-AP (Gastrokine 1 antibody) at dilution of 1:100 (under 10x lens).



Immunohistochemical analysis of paraffin-embedded human stomach using 19344-1-AP (Gastrokine 1 antibody) at dilution of 1:100 (under 40x lens).