

For Research Use Only

SLC25A20 Polyclonal antibody

Catalog Number: 19363-1-AP

12 Publications



Basic Information

Catalog Number:

19363-1-AP

Size:

150ul, Concentration: 600 ug/ml by Nanodrop and 300 ug/ml by Bradford method using BSA as the standard;

Source:

Rabbit

Isotype:

IgG

Immunogen Catalog Number:

AG6896

GenBank Accession Number:

BC001689

GeneID (NCBI):

788

UNIPROT ID:

O43772

Full Name:

solute carrier family 25 (carnitine/acylcarnitine translocase), member 20

Calculated MW:

33 kDa

Observed MW:

33 kDa

Purification Method:

Antigen affinity purification

Recommended Dilutions:

WB 1:1000-1:6000

IHC 1:50-1:500

IF/ICC 1:10-1:100

Applications

Tested Applications:

WB, IHC, IF/ICC, ELISA

Cited Applications:

WB, IHC

Species Specificity:

human, mouse, rat

Cited Species:

human, mouse

Note-IHC: suggested antigen retrieval with TE buffer pH 9.0; (*) Alternatively, antigen retrieval may be performed with citrate buffer pH 6.0

Positive Controls:

WB : Saos-2 cells, mouse heart tissue, human testis tissue, mouse skeletal muscle tissue, mouse testis tissue, rat testis tissue

IHC : mouse heart tissue, human heart tissue, human hepatocirrhosis tissue

IF/ICC : Hela cells, MCF-7 cells

Notable Publications

Author	Pubmed ID	Journal	Application
Lei Wu	29116185	Sci Rep	WB
Nicole M Sayles	35263592	Cell Rep	WB
Jin-Ho Koh	32760285	Front Physiol	WB

Storage

Storage:

Store at -20°C. Stable for one year after shipment.

Storage Buffer:

PBS with 0.02% sodium azide and 50% glycerol, pH7.3

Aliquoting is unnecessary for -20°C storage

*** 20ul sizes contain 0.1% BSA

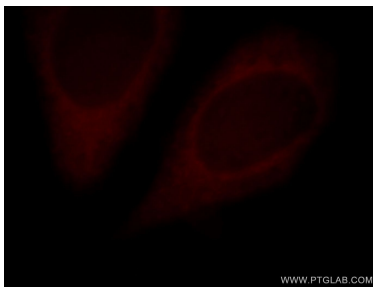
For technical support and original validation data for this product please contact:

T: 1 (888) 4PTGLAB (1-888-478-4522) (toll free in USA), or 1(312) 455-8498 (outside USA)

E: proteintech@ptglab.com
W: ptglab.com

This product is exclusively available under Proteintech Group brand and is not available to purchase from any other manufacturer.

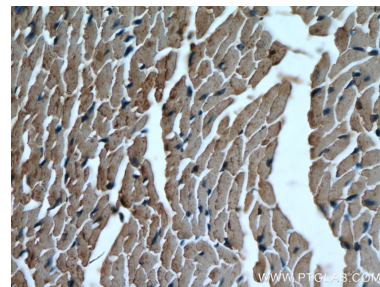
Selected Validation Data



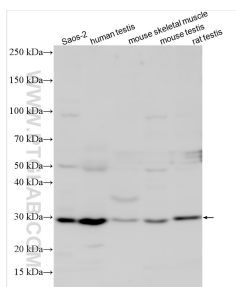
Immunofluorescent analysis of HeLa cells, using SLC25A20 antibody 19363-1-AP at 1:25 dilution and Rhodamine-labeled goat anti-rabbit IgG (red).



Immunohistochemical analysis of paraffin-embedded mouse heart tissue slide using 19363-1-AP (SLC25A20 antibody) at dilution of 1:200 (under 10x lens). Heat mediated antigen retrieval with Tris-EDTA buffer (pH 9.0).



Immunohistochemical analysis of paraffin-embedded mouse heart tissue slide using 19363-1-AP (SLC25A20 antibody) at dilution of 1:200 (under 40x lens). Heat mediated antigen retrieval with Tris-EDTA buffer (pH 9.0).



Various lysates were subjected to SDS PAGE followed by western blot with 19363-1-AP (SLC25A20 antibody) at dilution of 1:3000 incubated at room temperature for 1.5 hours.