

For Research Use Only

COX16 Polyclonal antibody

Catalog Number: 19425-1-AP

Featured Product

7 Publications



Basic Information

Catalog Number:

19425-1-AP

Size:

150ul, Concentration: 300 ug/ml by Nanodrop and 160 ug/ml by Bradford method using BSA as the standard;

Source:

Rabbit

Isotype:

IgG

Immunogen Catalog Number:

AG13756

GenBank Accession Number:

BC001702

GeneID (NCBI):

51241

UNIPROT ID:

Q9P0S2

Full Name:

COX16 cytochrome c oxidase assembly homolog (S. cerevisiae)

Calculated MW:

106 aa, 12 kDa

Observed MW:

12 kDa

Purification Method:

Antigen affinity purification

Recommended Dilutions:

WB: 1:500-1:2000

IHC: 1:50-1:500

IF/ICC: 1:200-1:800

Applications

Tested Applications:

WB, IHC, IF/ICC, ELISA

Cited Applications:

WB

Species Specificity:

human, mouse

Cited Species:

human, mouse

Note-IHC: suggested antigen retrieval with TE buffer pH 9.0; (*) Alternatively, antigen retrieval may be performed with citrate buffer pH 6.0

Positive Controls:

WB: A549 cells, HeLa cells, SH-SY5Y cells

IHC: human stomach tissue, human ovary cancer tissue

IF/ICC: MCF-7 cells,

Notable Publications

Author	Pubmed ID	Journal	Application
Jasmin Adriana Schafer	34847359	Mol Cell	WB
Eva Nývltová	35750769	Nat Commun	WB
Abhishek Aich	29381136	Elife	WB

Storage

Storage:

Store at -20°C. Stable for one year after shipment.

Storage Buffer:

PBS with 0.02% sodium azide and 50% glycerol, pH7.3

Aliquoting is unnecessary for -20°C storage

*** 20ul sizes contain 0.1% BSA

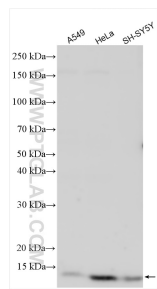
For technical support and original validation data for this product please contact:

T: 1 (888) 4PTGLAB (1-888-478-4522) (toll free in USA), or 1(312) 455-8498 (outside USA)

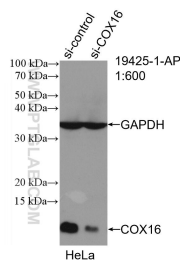
E: proteintech@ptglab.com
W: ptglab.com

This product is exclusively available under Proteintech Group brand and is not available to purchase from any other manufacturer.

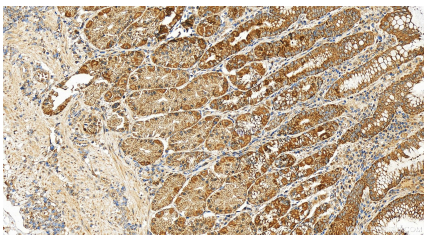
Selected Validation Data



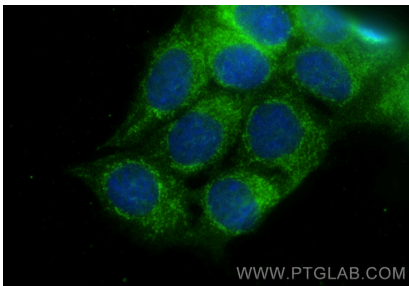
Various lysates were subjected to SDS PAGE followed by western blot with 19425-1-AP (COX16 antibody) at dilution of 1:1000 incubated at room temperature for 1.5 hours.



WB result of COX16 antibody (19425-1-AP; 1:600; incubated at room temperature for 1.5 hours) with sh-Control and sh-COX16 transfected HeLa cells.



Immunohistochemical analysis of paraffin-embedded human stomach tissue slide using 19425-1-AP (COX16 antibody) at dilution of 1:200 (under 20x lens). Heat mediated antigen retrieval with Tris-EDTA buffer (pH 9.0).



Immunofluorescent analysis of (4% PFA) fixed MCF-7 cells using COX16 antibody (19425-1-AP) at dilution of 1:400 and Multi-rAb Coralite® Plus 488-Goat Anti-Rabbit Recombinant Secondary Antibody (H+L) (RGAR002).