

For Research Use Only

ANO3 Polyclonal antibody

Catalog Number: 19489-1-AP

1 Publications



Basic Information

Catalog Number:

19489-1-AP

Size:

150ul , Concentration: 180 ug/ml by Nanodrop and 173 ug/ml by Bradford method using BSA as the standard;

Source:

Rabbit

Isotype:

IgG

GenBank Accession Number:

NM_031418

GeneID (NCBI):

63982

UNIPROT ID:

Q9BYT9

Full Name:

anoctamin 3

Calculated MW:

115 kDa

Observed MW:

100-115 kDa

Purification Method:

Antigen affinity purification

Recommended Dilutions:

WB 1:500-1:1000

IP 0.5-4.0 ug for 1.0-3.0 mg of total protein lysate

Applications

Tested Applications:

WB, IP, ELISA

Cited Applications:

IF, IP

Species Specificity:

human, mouse

Cited Species:

rat

Positive Controls:

WB : mouse brain tissue, mouse skin tissue, mouse ovary tissue, mouse kidney tissue

IP : mouse testis tissue,

Background Information

ANO3, also named as C11orf25, TMEM16C and GENX-3947, belongs to the anoctamin family. It may act as a calcium-activated chloride channel.

Notable Publications

Author	Pubmed ID	Journal	Application
Yize Li	33779892	Neurosci Bull	IP, IF

Storage

Storage:

Store at -20°C. Stable for one year after shipment.

Storage Buffer:

PBS with 0.02% sodium azide and 50% glycerol pH 7.3.

Aliquoting is unnecessary for -20°C storage

*** 20ul sizes contain 0.1% BSA

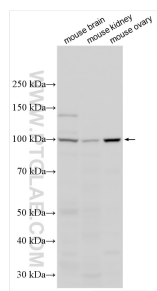
For technical support and original validation data for this product please contact:

T: 1 (888) 4PTGLAB (1-888-478-4522) (toll free in USA), or 1(312) 455-8498 (outside USA)

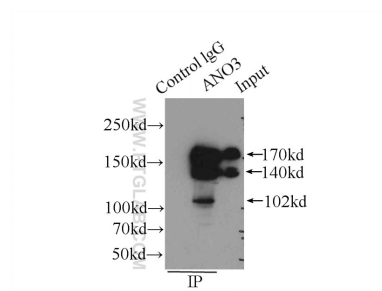
E: proteintech@ptglab.com
W: ptglab.com

This product is exclusively available under Proteintech Group brand and is not available to purchase from any other manufacturer.

Selected Validation Data



Various lysates were subjected to SDS PAGE followed by western blot with 19489-1-AP (ANO3 antibody) at dilution of 1:600 incubated at room temperature for 1.5 hours.



IP result of anti-ANO3 (IP:19489-1-AP, 4ug; Detection:19489-1-AP 1:1000) with mouse testis tissue lysate 4000ug.