

For Research Use Only

VLDLR Polyclonal antibody

Catalog Number: 19493-1-AP

Featured Product

10 Publications



Basic Information

Catalog Number:

19493-1-AP

Size:

150ul, Concentration: 300 ug/ml by Nanodrop and 287 ug/ml by Bradford method using BSA as the standard;

Source:

Rabbit

Isotype:

IgG

GenBank Accession Number:

NM_003383

GeneID (NCBI):

7436

UNIPROT ID:

P98155

Full Name:

very low density lipoprotein receptor

Calculated MW:

96 kDa

Observed MW:

96 kDa

Purification Method:

Antigen affinity purification

Recommended Dilutions:

WB 1:500-1:1000

IF/ICC 1:50-1:500

Applications

Tested Applications:

WB, IF/ICC, ELISA

Cited Applications:

WB, IF

Species Specificity:

human

Cited Species:

human, mouse, rat, chicken, zebrafish

Positive Controls:

WB: MCF-7 cells,

IF/ICC: HeLa cells,

Background Information

VLDLR binds VLDL and transports it into cells by endocytosis. In order to be internalized, the receptor-ligand complexes must first cluster into clathrin-coated pits. VLDLR binding to Reelin induces tyrosine phosphorylation of Dab1 and modulation of Tau phosphorylation (cytoplasmic domain of low-density lipoprotein receptor). For glycosylated, the MW of VLDLR migrates to ~160kd.

Notable Publications

Author	Pubmed ID	Journal	Application
Rui Guo	36313120	Front Nutr	WB
Xue Wu	31632274	Front Pharmacol	WB
Limin Liu	35108315	PLoS One	WB

Storage

Storage:

Store at -20°C. Stable for one year after shipment.

Storage Buffer:

PBS with 0.02% sodium azide and 50% glycerol pH 7.3.

Aliquoting is unnecessary for -20°C storage

*** 20ul sizes contain 0.1% BSA

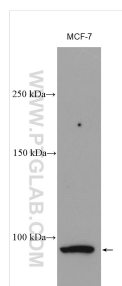
For technical support and original validation data for this product please contact:

T: 1 (888) 4PTGLAB (1-888-478-4522) (toll free in USA), or 1(312) 455-8498 (outside USA)

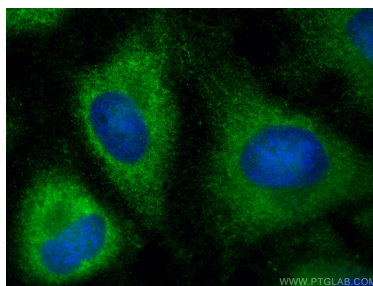
E: proteintech@ptglab.com
W: ptglab.com

This product is exclusively available under Proteintech Group brand and is not available to purchase from any other manufacturer.

Selected Validation Data



MCF-7 cells were subjected to SDS PAGE followed by western blot with 19493-1-AP (VLDLR antibody) at dilution of 1:800 incubated at room temperature for 1.5 hours.



Immunofluorescent analysis of (-20°C Ethanol) fixed HeLa cells using VLDLR antibody (19493-1-AP) at dilution of 1:200 and CoraLite®488-Conjugated AffiniPure Goat Anti-Rabbit IgG(H+L) (SA00013-2).