

For Research Use Only

# PACS2-Specific Polyclonal antibody



Catalog Number: 19508-1-AP

Featured Product

16 Publications

## Basic Information

<b>Catalog Number:</b> 19508-1-AP	<b>GenBank Accession Number:</b> NM_015197	<b>Purification Method:</b> Antigen affinity purification
<b>Size:</b> 150ul , Concentration: 600 µg/ml by Nanodrop;	<b>GeneID (NCBI):</b> 23241	<b>Recommended Dilutions:</b> WB 1:500-1:1000 IHC 1:50-1:500 IF 1:10-1:100
<b>Source:</b> Rabbit	<b>Full Name:</b> phosphofurin acidic cluster sorting protein 2	
<b>Isotype:</b> IgG	<b>Calculated MW:</b> 98 kDa	
	<b>Observed MW:</b> 116 kDa	

## Applications

<b>Tested Applications:</b> IF, IHC, WB, ELISA	<b>Positive Controls:</b> WB : mouse brain tissue, IHC : human liver tissue, IF : MCF-7 cells,
<b>Cited Applications:</b> IF, IHC, IP, WB	
<b>Species Specificity:</b> human, mouse, rat	
<b>Cited Species:</b> human, rat, mouse	

**Note-IHC: suggested antigen retrieval with TE buffer pH 9.0; (\*) Alternatively, antigen retrieval may be performed with citrate buffer pH 6.0**

## Background Information

PACS2, also named PACS1L or KIAA0602, is one of PACS (phosphofurin acidic cluster sorting) proteins which are one such family of multifunctional membrane traffic regulators that mediate organ homeostasis and have important roles in diverse pathologies and disease states. PACS2 is a multifunctional sorting protein that controls the endoplasmic reticulum (ER)-mitochondria communication, ER homeostasis, and apoptosis. PACS2 may be involved in ion channel trafficking, directing acidic cluster-containing ion channels to distinct subcellular compartments.

## Notable Publications

Author	Pubmed ID	Journal	Application
Chanyue Zhao	36138342	Mol Med	WB
Maria Sol Herrera-Cruz	34743744	Biol Direct	WB
Wei Shi	34726248	Int J Oncol	WB

## Storage

**Storage:**  
Store at -20°C. Stable for one year after shipment.  
**Storage Buffer:**  
PBS with 0.02% sodium azide and 50% glycerol pH 7.3.  
Aliquoting is unnecessary for -20°C storage

\*\*\* 20ul sizes contain 0.1% BSA

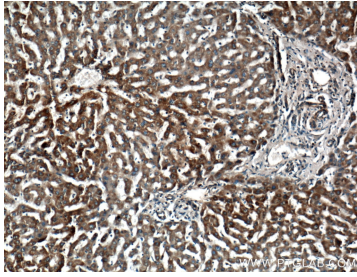
For technical support and original validation data for this product please contact:

T: 1 (888) 4PTGLAB (1-888-478-4522) (toll free in USA), or 1(312) 455-8498 (outside USA)

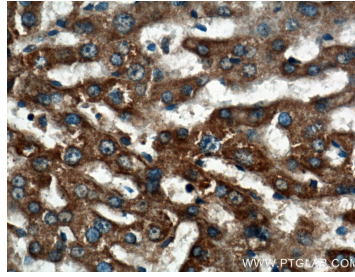
E: [proteintech@ptglab.com](mailto:proteintech@ptglab.com)  
W: [ptglab.com](http://ptglab.com)

This product is exclusively available under Proteintech Group brand and is not available to purchase from any other manufacturer.

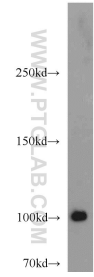
## Selected Validation Data



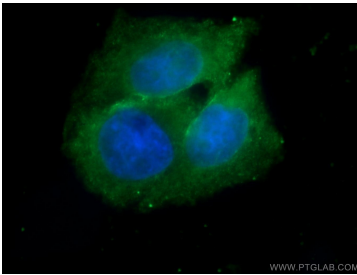
Immunohistochemical analysis of paraffin-embedded human liver tissue slide using 19508-1-AP (PACS2-Specific antibody) at dilution of 1:200 (under 10x lens).



Immunohistochemical analysis of paraffin-embedded human liver tissue slide using 19508-1-AP (PACS2-Specific antibody) at dilution of 1:200 (under 40x lens).



mouse brain tissue were subjected to SDS PAGE followed by western blot with 19508-1-AP (PACS2-Specific antibody) at dilution of 1:600 incubated at room temperature for 1.5 hours.



Immunofluorescent analysis of MCF-7 cells using 19508-1-AP (PACS2-Specific antibody) at dilution of 1:25 and Alexa Fluor 488-conjugated AffiniPure Goat Anti-Rabbit IgG(H+L).