

For Research Use Only

EDG7-Specific Polyclonal antibody

Catalog Number: 19509-1-AP

3 Publications



Basic Information

Catalog Number:

19509-1-AP

Size:

150ul, Concentration: 380 ug/ml by Nanodrop and 353 ug/ml by Bradford method using BSA as the standard;

Source:

Rabbit

Isotype:

IgG

GenBank Accession Number:

NM_012152

GeneID (NCBI):

23566

UNIPROT ID:

Q9UBY5

Full Name:

lysophosphatidic acid receptor 3

Calculated MW:

40 kDa

Observed MW:

40-50 kDa

Purification Method:

Antigen affinity purification

Recommended Dilutions:

WB 1:500-1:1000

IHC 1:20-1:200

Applications

Tested Applications:

WB, IHC, ELISA

Cited Applications:

WB, IHC, IF

Species Specificity:

human, mouse, rat

Cited Species:

human, mouse

Positive Controls:

WB : PC-3 cells, human testis tissue, mouse pancreas tissue

IHC : human heart tissue,

Note-IHC: suggested antigen retrieval with TE buffer pH 9.0; (*) Alternatively, antigen retrieval may be performed with citrate buffer pH 6.0

Background Information

LPAR3, also named as EDG7 and LPA3, belongs to the G-protein coupled receptor 1 family. LPAR3 is a receptor for lysophosphatidic acid (LPA), a mediator of diverse cellular activities. LPAR3 may play a role in the development of ovarian cancer. Seems to be coupled to the G(i)/G(o) and G(q) families of heteromeric G proteins. The antibody is specific to LPAR3.

Notable Publications

Author	Pubmed ID	Journal	Application
Anastasia Meshcheryakova	31049165	Comput Struct Biotechnol J	IHC
Dandan Cao	39747825	Nat Commun	IF
Alison W Ha	39415037	Pediatr Res	WB

Storage

Storage:

Store at -20°C. Stable for one year after shipment.

Storage Buffer:

PBS with 0.02% sodium azide and 50% glycerol pH 7.3.

Aliquoting is unnecessary for -20°C storage

*** 20ul sizes contain 0.1% BSA

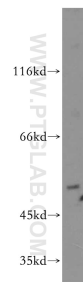
For technical support and original validation data for this product please contact:

T: 1 (888) 4PTGLAB (1-888-478-4522) (toll free in USA), or 1(312) 455-8498 (outside USA)

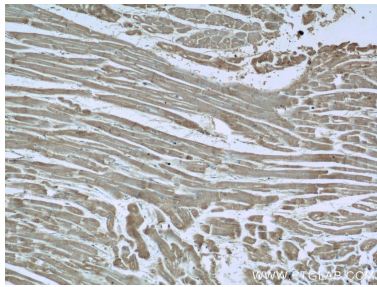
E: proteintech@ptglab.com
W: ptglab.com

This product is exclusively available under Proteintech Group brand and is not available to purchase from any other manufacturer.

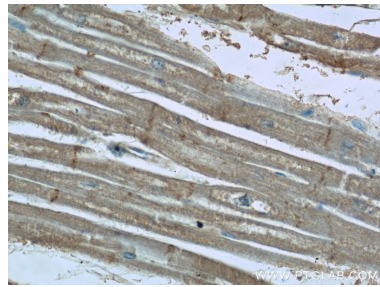
Selected Validation Data



PC-3 cells were subjected to SDS PAGE followed by western blot with 19509-1-AP (EDG7-Specific antibody) at dilution of 1:500 incubated at room temperature for 1.5 hours.



Immunohistochemical analysis of paraffin-embedded human heart tissue slide using 19509-1-AP (EDG7-Specific antibody at dilution of 1:100 (under 10x lens).



Immunohistochemical analysis of paraffin-embedded human heart tissue slide using 19509-1-AP (EDG7-Specific antibody at dilution of 1:100 (under 40x lens).