

For Research Use Only

TOR2A Polyclonal antibody

Catalog Number: 19511-1-AP

2 Publications



Basic Information

Catalog Number:

19511-1-AP

Size:

150ul, Concentration: 133 ug/ml by Nanodrop and 133 ug/ml by Bradford method using BSA as the standard;

Source:

Rabbit

Isotype:

IgG

GenBank Accession Number:

NM_001085347

GeneID (NCBI):

27433

UNIPROT ID:

Q8N2E6

Full Name:

torsin family 2, member A

Calculated MW:

36 kDa

Observed MW:

40-45 kDa

Purification Method:

Antigen affinity purification

Recommended Dilutions:

WB 1:500-1:1000

IHC 1:50-1:500

IF/ICC 1:10-1:100

Applications

Tested Applications:

WB, IHC, IF/ICC, ELISA

Cited Applications:

WB

Species Specificity:

human, mouse

Cited Species:

human

Note-IHC: suggested antigen retrieval with TE buffer pH 9.0; (*) Alternatively, antigen retrieval may be performed with citrate buffer pH 6.0

Positive Controls:

WB : mouse brain tissue, mouse liver tissue

IHC : human stomach cancer tissue,

IF/ICC : HepG2 cells,

Background Information

TOR2A, also named as TORP1, UNQ6408/PRO21181, HEMBA1005096 and PSEC0218, belongs to the clpA/clpB family and Torsin subfamily. TOR2A contain two peptides Salusin-alpha and Salusin-beta. Salusins -alpha and -beta may be endocrine and/or paracrine factors able to increase intracellular calcium concentrations and induce cell mitogenesis. Salusins may also be potent hypotensive peptides.

Notable Publications

Author	Pubmed ID	Journal	Application
Ming-Xia Zhao	28333148	Cell Death Dis	WB
Yunshang Chen	35115490	Cell Death Dis	WB

Storage

Storage:

Store at -20°C. Stable for one year after shipment.

Storage Buffer:

PBS with 0.02% sodium azide and 50% glycerol pH 7.3.

Aliquoting is unnecessary for -20°C storage

*** 20ul sizes contain 0.1% BSA

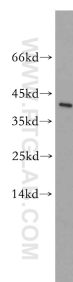
For technical support and original validation data for this product please contact:

T: 1 (888) 4PTGLAB (1-888-478-4522) (toll free in USA), or 1(312) 455-8498 (outside USA)

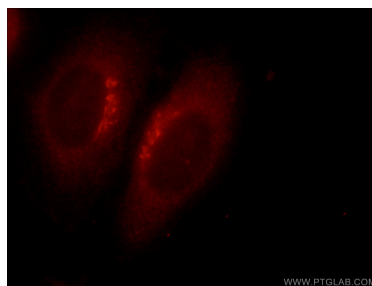
E: proteintech@ptglab.com
W: ptglab.com

This product is exclusively available under Proteintech Group brand and is not available to purchase from any other manufacturer.

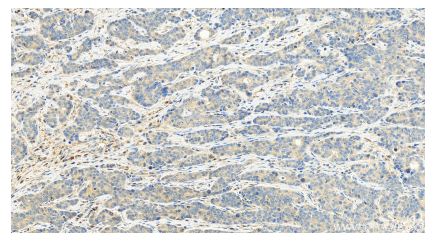
Selected Validation Data



mouse brain tissue were subjected to SDS PAGE followed by western blot with 19511-1-AP (TOR2A antibody) at dilution of 1:100 incubated at room temperature for 1.5 hours.



Immunofluorescent analysis of HepG2 cells using 19511-1-AP (TOR2A antibody) at dilution of 1:25 and Rhodamine-Goat anti-Rabbit IgG.



Immunohistochemical analysis of paraffin-embedded stomach cancer slide using 19511-1-AP (TOR2A antibody) at dilution of 1:100 (under 20x lens). Heat mediated antigen retrieval with Tris-EDTA buffer (pH 9.0).