

For Research Use Only

AFMID Polyclonal antibody

Catalog Number: 19522-1-AP

Featured Product

4 Publications



Basic Information

Catalog Number:

19522-1-AP

Size:

150ul, Concentration: 300 ug/ml by Nanodrop and 247 ug/ml by Bradford method using BSA as the standard;

Source:

Rabbit

Isotype:

IgG

GenBank Accession Number:

NM_001145526

GeneID (NCBI):

125061

UNIPROT ID:

Q63HM1

Full Name:

arylformamidase

Calculated MW:

35 kDa

Observed MW:

30 kDa

Purification Method:

Antigen affinity purification

Recommended Dilutions:

WB 1:500-1:2000

IHC 1:50-1:500

Applications

Tested Applications:

WB, IHC, ELISA

Cited Applications:

WB

Species Specificity:

human, mouse

Cited Species:

human, mouse

Positive Controls:

WB : mouse kidney tissue, mouse liver tissue, human liver tissue

IHC : human liver tissue,

Note-IHC: suggested antigen retrieval with TE buffer pH 9.0; (*) Alternatively, antigen retrieval may be performed with citrate buffer pH 6.0

Background Information

AFMID, also named as KF, belongs to the AFMID family. AFMID catalyzes the hydrolysis of N-formyl-L-kynurenine to L-kynurenine, the second step in the conversion of tryptophan to nicotinic acid, NAD(H) and NADP(H). AFMID is required for elimination of toxic metabolites.

Notable Publications

Author	Pubmed ID	Journal	Application
Kuan-Ting Lin	29449409	Genome Res	WB
Morten Dall	29408602	Mol Cell Endocrinol	WB
Krishna S Tummala	25453901	Cancer Cell	WB

Storage

Storage:

Store at -20°C. Stable for one year after shipment.

Storage Buffer:

PBS with 0.02% sodium azide and 50% glycerol pH 7.3.

Aliquoting is unnecessary for -20°C storage

*** 20ul sizes contain 0.1% BSA

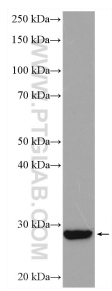
For technical support and original validation data for this product please contact:

T: 1 (888) 4PTGLAB (1-888-478-4522) (toll free in USA), or 1(312) 455-8498 (outside USA)

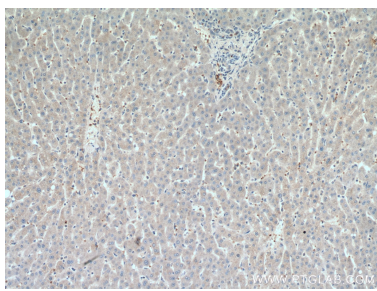
E: proteintech@ptglab.com
W: ptglab.com

This product is exclusively available under Proteintech Group brand and is not available to purchase from any other manufacturer.

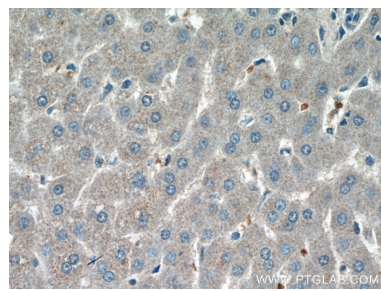
Selected Validation Data



mouse kidney tissue were subjected to SDS PAGE followed by western blot with 19522-1-AP (AFMID antibody) at dilution of 1:1000 incubated at room temperature for 1.5 hours.



Immunohistochemical analysis of paraffin-embedded human liver tissue slide using 19522-1-AP (AFMID antibody) at dilution of 1:100 (under 10x lens).



Immunohistochemical analysis of paraffin-embedded human liver tissue slide using 19522-1-AP (AFMID antibody) at dilution of 1:100 (under 40x lens).