

For Research Use Only

# SEN5-Specific Polyclonal antibody

Catalog Number:19529-1-AP

Featured Product

12 Publications



## Basic Information

### Catalog Number:

19529-1-AP

### Size:

150ul , Concentration: 1000 ug/ml by Nanodrop and 487 ug/ml by Bradford method using BSA as the standard;

### Source:

Rabbit

### Isotype:

IgG

### GenBank Accession Number:

NM\_152699

### GeneID (NCBI):

205564

### UNIPROT ID:

Q96HI0

### Full Name:

SUMO1/sentrin specific peptidase 5

### Calculated MW:

87 kDa

### Observed MW:

97 kDa

### Purification Method:

Antigen affinity purification

### Recommended Dilutions:

IP 0.5-4.0 ug for 1.0-3.0 mg of total protein lysate  
IHC 1:200-1:600

## Applications

### Tested Applications:

IHC, IP, ELISA

### Cited Applications:

WB, IHC, IF, CoIP

### Species Specificity:

human, mouse, rat

### Cited Species:

human, mouse, rat

### Positive Controls:

IP : HeLa cells,

IHC : human cervical cancer tissue, human placenta tissue

**Note-IHC: suggested antigen retrieval with TE buffer pH 9.0; (\*) Alternatively, antigen retrieval may be performed with citrate buffer pH 6.0**

## Background Information

SEN5, also named as FKSG45, belongs to the peptidase C48 family. SEN5 is a protease that catalyzes two essential functions in the SUMO pathway: processing of full-length SUMO3 to its mature form and deconjugation of SUMO2 and SUMO3 from targeted proteins. SEN5 has weak proteolytic activity against full-length SUMO1 or SUMO1 conjugates. It is required for cell division. The antibody is specific to SEN5.

## Notable Publications

Author	Pubmed ID	Journal	Application
Mamta Amrute-Nayak	36417853	Cell Rep	WB
Bin Yu	34060616	J Cell Sci	WB
Bin Yu	34313310	J Cell Sci	WB

## Storage

### Storage:

Store at -20°C. Stable for one year after shipment.

### Storage Buffer:

PBS with 0.02% sodium azide and 50% glycerol pH 7.3.

Aliquoting is unnecessary for -20°C storage

\*\*\* 20ul sizes contain 0.1% BSA

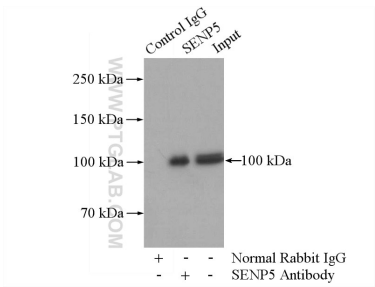
For technical support and original validation data for this product please contact:

T: 1 (888) 4PTGLAB (1-888-478-4522) (toll free in USA), or 1(312) 455-8498 (outside USA)

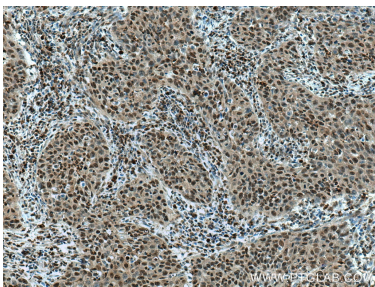
E: [proteintech@ptglab.com](mailto:proteintech@ptglab.com)  
W: [ptglab.com](http://ptglab.com)

This product is exclusively available under Proteintech Group brand and is not available to purchase from any other manufacturer.

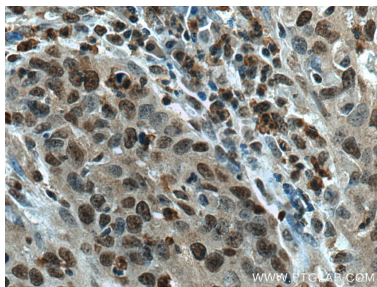
Selected Validation Data



IP result of anti-SEN5-Specific (IP:19529-1-AP, 4ug; Detection:19529-1-AP 1:300) with HeLa cells lysate 520ug.



Immunohistochemical analysis of paraffin-embedded human cervical cancer tissue slide using 19529-1-AP (SEN5-Specific antibody) at dilution of 1:200 (under 10x lens). Heat mediated antigen retrieval with Tris-EDTA buffer (pH 9.0).



Immunohistochemical analysis of paraffin-embedded human cervical cancer tissue slide using 19529-1-AP (SEN5-Specific antibody) at dilution of 1:200 (under 40x lens). Heat mediated antigen retrieval with Tris-EDTA buffer (pH 9.0).