

For Research Use Only

FANCA-Specific Polyclonal antibody

Catalog Number:19542-1-AP



Basic Information

Catalog Number:

19542-1-AP

Size:

150ul , Concentration: 300 ug/ml by Nanodrop and 280 ug/ml by Bradford method using BSA as the standard;

Source:

Rabbit

Isotype:

IgG

GenBank Accession Number:

NM_000135

GeneID (NCBI):

2175

UNIPROT ID:

O15360

Full Name:

Fanconi anemia, complementation group A

Calculated MW:

163 kDa

Observed MW:

163 kDa

Purification Method:

Antigen affinity purification

Recommended Dilutions:

WB 1:200-1:1000

Applications

Tested Applications:

WB, ELISA

Species Specificity:

human

Positive Controls:

WB : HeLa cells, HEK-293 cells

Background Information

FANCA, also named as FAA, FACA and FANCH, is DNA repair protein that may operate in a postreplication repair or a cell cycle checkpoint function. FANCA may be involved in interstrand DNA cross-link repair and in the maintenance of normal chromosome stability. Defects in FANCA are a cause of Fanconi anemia (FA) which is a genetically heterogeneous, autosomal recessive disorder characterized by progressive pancytopenia, a diverse assortment of congenital malformations, and a predisposition to the development of malignancies. The antibody is specific to isoform1 of FANCA.

Storage

Storage:

Store at -20°C. Stable for one year after shipment.

Storage Buffer:

PBS with 0.02% sodium azide and 50% glycerol pH 7.3.

Aliquoting is unnecessary for -20°C storage

*** 20ul sizes contain 0.1% BSA

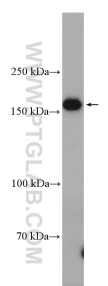
For technical support and original validation data for this product please contact:

T: 1 (888) 4PTGLAB (1-888-478-4522) (toll free in USA), or 1(312) 455-8498 (outside USA)

E: proteintech@ptglab.com
W: ptglab.com

This product is exclusively available under Proteintech Group brand and is not available to purchase from any other manufacturer.

Selected Validation Data



HeLa cells were subjected to SDS PAGE followed by western blot with 19542-1-AP (FANCA-Specific antibody) at dilution of 1:300 incubated at room temperature for 1.5 hours.