

For Research Use Only

LPIN2 Polyclonal antibody

Catalog Number: 19545-1-AP



Basic Information

Catalog Number:

19545-1-AP

Size:

150ul , Concentration: 180 ug/ml by Bradford method using BSA as the standard;

Source:

Rabbit

Isotype:

IgG

GenBank Accession Number:

NM_014646

GeneID (NCBI):

9663

UNIPROT ID:

Q92539

Full Name:

lipin 2

Calculated MW:

99 kDa

Observed MW:

99 kDa

Purification Method:

Antigen affinity purification

Recommended Dilutions:

WB 1:500-1:2000

Applications

Tested Applications:

WB, ELISA

Species Specificity:

human

Positive Controls:

WB : HT-1080 cells, human liver tissue

Background Information

Lipin 2, also named as KIAA0249, belongs to the lipin family. Defects in LPIN2 are the cause of Majeed syndrome ajeed syndrome which is an autosomal recessive disorder combining features of chronic recurrent multifocal osteomyelitis.

Storage

Storage:

Store at -20°C. Stable for one year after shipment.

Storage Buffer:

PBS with 0.02% sodium azide and 50% glycerol pH 7.3.

Aliquoting is unnecessary for -20°C storage

*** 20ul sizes contain 0.1% BSA

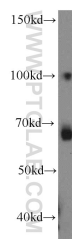
For technical support and original validation data for this product please contact:

T: 1 (888) 4PTGLAB (1-888-478-4522) (toll free in USA), or 1(312) 455-8498 (outside USA)

E: proteintech@ptglab.com
W: ptglab.com

This product is exclusively available under Proteintech Group brand and is not available to purchase from any other manufacturer.

Selected Validation Data



HT-1080 cells were subjected to SDS PAGE followed by western blot with 19545-1-AP (LPIN2 antibody) at dilution of 1:300 incubated at room temperature for 1.5 hours.