

For Research Use Only

LRWD1 Polyclonal antibody

Catalog Number: 19546-1-AP **1 Publications**



Basic Information

Catalog Number: 19546-1-AP	GenBank Accession Number: NM_152892	Purification Method: Antigen affinity purification
Size: 150ul , Concentration: 900 µg/ml by Nanodrop and 353 µg/ml by Bradford method using BSA as the standard;	GeneID (NCBI): 222229	Recommended Dilutions: WB 1:5000-1:50000
Source: Rabbit	Full Name: leucine-rich repeats and WD repeat domain containing 1	IP 0.5-4.0 ug for IP and 1:500-1:2000 for WB
Isotype: IgG	Calculated MW: 71 kDa	
	Observed MW: 85 kDa	

Applications

Tested Applications: IP, WB, ELISA	Positive Controls:
Cited Applications: WB	WB : mouse testis tissue, rat testis tissue
Species Specificity: human, mouse, rat	IP : mouse testis tissue,
Cited Species: human	

Background Information

LRWD1 contains 3 LRR (leucine-rich) repeats and 5 WD repeats. LRWD1 is phosphorylated upon DNA damage by ATM or ATR. The antibody recognizes the N-term of LRWD1.

Notable Publications

Author	Pubmed ID	Journal	Application
Jason M Scovell	33913480	Development	WB

Storage

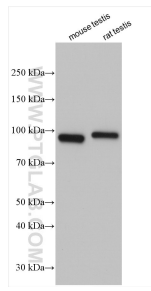
Storage:
Store at -20°C. Stable for one year after shipment.
Storage Buffer:
PBS with 0.02% sodium azide and 50% glycerol pH 7.3.
Aliquoting is unnecessary for -20°C storage

***** 20ul sizes contain 0.1% BSA**

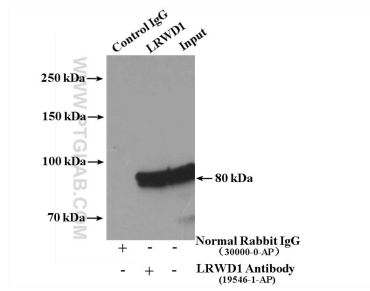
For technical support and original validation data for this product please contact:
T: 1 (888) 4PTGLAB (1-888-478-4522) (toll free in USA), or 1(312) 455-8498 (outside USA)
E: proteintech@ptglab.com
W: ptglab.com

This product is exclusively available under Proteintech Group brand and is not available to purchase from any other manufacturer.

Selected Validation Data



Various lysates were subjected to SDS PAGE followed by western blot with 19546-1-AP (LRWD1 antibody) at dilution of 1:10000 incubated at room temperature for 1.5 hours.



IP Result of anti-LRWD1 (IP:19546-1-AP, 4ug; Detection:19546-1-AP 1:1000) with mouse testis tissue lysate 4000ug.