

For Research Use Only

Phospho-Smtnl1 (Ser301) Polyclonal antibody



Catalog Number: 19560-1-AP

1 Publications

Basic Information

Catalog Number: 19560-1-AP	GenBank Accession Number: NM_024230	Purification Method: Antigen affinity purification
Size: 100ul , Concentration: 629 µg/ml by Nanodrop and 629 µg/ml by Bradford method using BSA as the standard;	GeneID (NCBI): 68678	Recommended Dilutions: WB 1:500-1:1000
Source: Rabbit	Full Name: smoothelin-like 1	
Isotype: IgG	Calculated MW: 49 kDa	
	Observed MW: 50 kDa	

Applications

Tested Applications: WB, ELISA	Positive Controls: WB : mouse bladder tissue,
Cited Applications: WB	
Species Specificity: mouse	
Cited Species: mouse	

Background Information

Smtnl1 belongs to the smoothelin family. The antibody recognize Ser(301) phospho of Smtnl1.

Notable Publications

Author	Pubmed ID	Journal	Application
Beata Lontay	26048986	J Biol Chem	WB

Storage

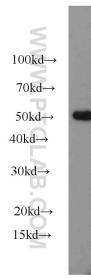
Storage:
Store at -20°C. Stable for one year after shipment.
Storage Buffer:
PBS with 0.02% sodium azide and 50% glycerol pH 7.3.
Aliquoting is unnecessary for -20°C storage

*** 20ul sizes contain 0.1% BSA

For technical support and original validation data for this product please contact:
T: 1 (888) 4PTGLAB (1-888-478-4522) (toll free in USA), or 1(312) 455-8498 (outside USA)
E: proteintech@ptglab.com
W: ptglab.com

This product is exclusively available under Proteintech Group brand and is not available to purchase from any other manufacturer.

Selected Validation Data



mouse bladder tissue were subjected to SDS PAGE followed by western blot with 19560-1-AP (Smtnl1-phospho-S301 antibody) at dilution of 1:500 incubated at room temperature for 1.5 hours.