

For Research Use Only

NAB2 Polyclonal antibody

Catalog Number: 19601-1-AP

2 Publications



Basic Information

Catalog Number:

19601-1-AP

Size:

150ul, Concentration: 400 ug/ml by Nanodrop and 267 ug/ml by Bradford method using BSA as the standard;

Source:

Rabbit

Isotype:

IgG

Immunogen Catalog Number:

AG6346

GenBank Accession Number:

BC065931

GeneID (NCBI):

4665

UNIPROT ID:

Q15742

Full Name:

NGFI-A binding protein 2 (EGR1 binding protein 2)

Calculated MW:

57 kDa

Observed MW:

57 kDa

Purification Method:

Antigen affinity purification

Recommended Dilutions:

WB 1:500-1:2000

IP 0.5-4.0 ug for 1.0-3.0 mg of total protein lysate

IHC 1:20-1:200

IF/ICC 1:400-1:1600

Applications

Tested Applications:

WB, IHC, IF/ICC, IP, ELISA

Cited Applications:

WB, IF

Species Specificity:

human, mouse, rat

Cited Species:

mouse

Note-IHC: suggested antigen retrieval with TE buffer pH 9.0; (*) Alternatively, antigen retrieval may be performed with citrate buffer pH 6.0

Positive Controls:

WB : human heart tissue, human brain tissue, K-562 cells, mouse thymus tissue

IP : K-562 cells,

IHC : human brain tissue, human kidney tissue

IF/ICC : MCF-7 cells,

Notable Publications

Author	Pubmed ID	Journal	Application
Yichen Wang	28763805	Invest Ophthalmol Vis Sci	IF
Yanli Zhang	36646797	Lab Anim (NY)	WB

Storage

Storage:

Store at -20°C. Stable for one year after shipment.

Storage Buffer:

PBS with 0.02% sodium azide and 50% glycerol pH 7.3.

Aliquoting is unnecessary for -20°C storage

*** 20ul sizes contain 0.1% BSA

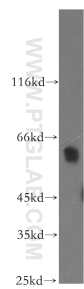
For technical support and original validation data for this product please contact:

T: 1 (888) 4PTGLAB (1-888-478-4522) (toll free in USA), or 1(312) 455-8498 (outside USA)

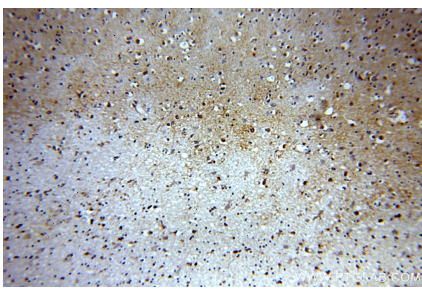
E: proteintech@ptglab.com
W: ptglab.com

This product is exclusively available under Proteintech Group brand and is not available to purchase from any other manufacturer.

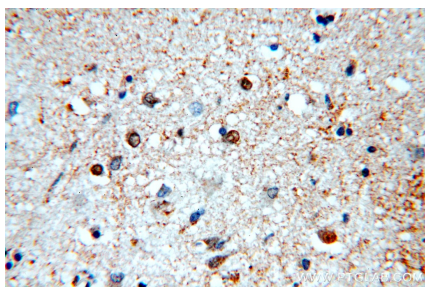
Selected Validation Data



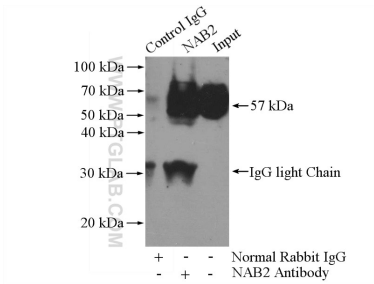
human heart tissue were subjected to SDS PAGE followed by western blot with 19601-1-AP (NAB2 antibody) at dilution of 1:500 incubated at room temperature for 1.5 hours.



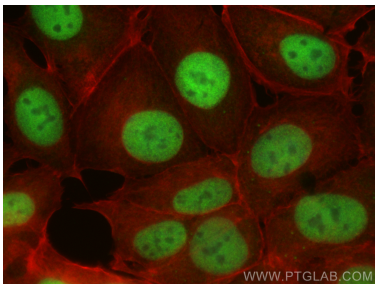
Immunohistochemical analysis of paraffin-embedded human brain using 19601-1-AP (NAB2 antibody) at dilution of 1:100 (under 10x lens).



Immunohistochemical analysis of paraffin-embedded human brain using 19601-1-AP (NAB2 antibody) at dilution of 1:100 (under 40x lens).



IP result of anti-NAB2 (IP:19601-1-AP, 4ug; Detection:19601-1-AP 1:700) with K-562 cells lysate 3200ug.



Immunofluorescent analysis of (4% PFA) fixed MCF-7 cells using NAB2 antibody (19601-1-AP) at dilution of 1:800 and CoraLite®488-Conjugated Goat Anti-Rabbit IgG(H+L) (SA00013-2), CoraLite®488-Conjugated Goat Anti-Mouse IgG(H+L) (SA00013-1) (red).