

For Research Use Only

PMCA2 Polyclonal antibody

Catalog Number: 19678-1-AP

4 Publications



Basic Information

Catalog Number:

19678-1-AP

Size:

150ul, Concentration: 260 ug/ml by Nanodrop and 193 ug/ml by Bradford method using BSA as the standard;

Source:

Rabbit

Isotype:

IgG

GenBank Accession Number:

NM_001001331

GeneID (NCBI):

491

UNIPROT ID:

Q01814

Full Name:

ATPase, Ca⁺⁺ transporting, plasma membrane 2

Calculated MW:

139 kDa

Observed MW:

137 kDa

Purification Method:

Antigen affinity purification

Recommended Dilutions:

WB 1:1000-1:4000

IHC 1:20-1:200

Applications

Tested Applications:

WB, IHC, ELISA

Cited Applications:

WB

Species Specificity:

human

Cited Species:

chicken, human

Positive Controls:

WB : human brain tissue, HEK-293 cells

IHC : human brain tissue,

Note-IHC: suggested antigen retrieval with TE buffer pH 9.0; (*) Alternatively, antigen retrieval may be performed with citrate buffer pH 6.0

Background Information

ATP2B2, also named as PMCA2, belongs to the cation transport ATPase (P-type) family and type IIB subfamily. This magnesium-dependent enzyme catalyzes the hydrolysis of ATP coupled with the transport of calcium out of the cell. ATP2B2 catalyze the reaction: $ATP + H_2O + Ca^{2+}(Cis) = ADP + phosphate + Ca^{2+}(Trans)$.

Notable Publications

Author	Pubmed ID	Journal	Application
Jie Yang	30334551	Metallomics	WB
M D Xi	29352487	Reprod Domest Anim	WB
Jie Yang	31479920	Mol Ther Nucleic Acids	WB

Storage

Storage:

Store at -20°C. Stable for one year after shipment.

Storage Buffer:

PBS with 0.02% sodium azide and 50% glycerol pH 7.3.

Aliquoting is unnecessary for -20°C storage

*** 20ul sizes contain 0.1% BSA

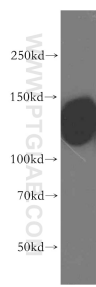
For technical support and original validation data for this product please contact:

T: 1 (888) 4PTGLAB (1-888-478-4522) (toll free in USA), or 1(312) 455-8498 (outside USA)

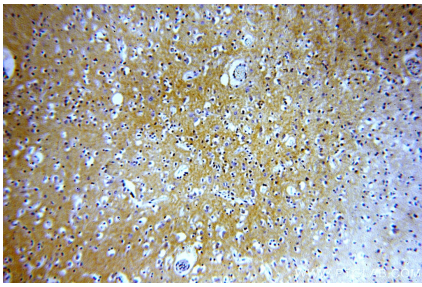
E: proteintech@ptglab.com
W: ptglab.com

This product is exclusively available under Proteintech Group brand and is not available to purchase from any other manufacturer.

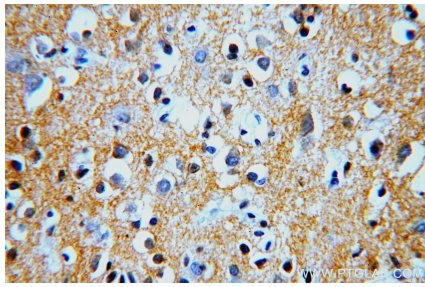
Selected Validation Data



human brain tissue were subjected to SDS PAGE followed by western blot with 19678-1-AP (PMCA2 antibody) at dilution of 1:500 incubated at room temperature for 1.5 hours.



Immunohistochemical analysis of paraffin-embedded human brain using 19678-1-AP (PMCA2 antibody) at dilution of 1:100 (under 10x lens).



Immunohistochemical analysis of paraffin-embedded human brain using 19678-1-AP (PMCA2 antibody) at dilution of 1:100 (under 40x lens).