

For Research Use Only

BLOC1S1-Specific Polyclonal antibody

Catalog Number: 19687-1-AP

Featured Product

11 Publications



Basic Information

Catalog Number:

19687-1-AP

Size:

150ul, Concentration: 400 ug/ml by Nanodrop;

Source:

Rabbit

Isotype:

IgG

GenBank Accession Number:

NM_001487

GeneID (NCBI):

2647

UNIPROT ID:

P78537

Full Name:

biogenesis of lysosomal organelles complex-1, subunit 1

Calculated MW:

17 kDa

Observed MW:

14-17 kDa

Purification Method:

Antigen affinity purification

Recommended Dilutions:

WB 1:500-1:2000

IP 0.5-4.0 ug for 1.0-3.0 mg of total protein lysate

IHC 1:20-1:200

Applications

Tested Applications:

WB, IP, IHC, ELISA

Cited Applications:

WB, IHC, IF, IP

Species Specificity:

human, mouse, rat

Cited Species:

human, mouse, rat

Note-IHC: suggested antigen retrieval with TE buffer pH 9.0; (*) Alternatively, antigen retrieval may be performed with citrate buffer pH 6.0

Positive Controls:

WB : human brain tissue, mouse brain tissue, rat brain tissue

IP : mouse brain tissue,

IHC : human small intestine tissue,

Background Information

BLOC1S1, also named as BLOS1, GCN5L1 and RT14, belongs to the BLOC1S1 family. BLOC1S1 may be involved in the biogenesis of specialized organelles of the endosomal-lysosomal system. The antibody is specific to BLOC1S1.

Notable Publications

Author	Pubmed ID	Journal	Application
Elham Khatamzas	28923824	EMBO J	WB
Daria Sicari	31647176	FEBS J	WB,IHC,IF,IP
Tingting Lv	31760589	J Physiol Biochem	WB,IHC

Storage

Storage:

Store at -20°C. Stable for one year after shipment.

Storage Buffer:

PBS with 0.02% sodium azide and 50% glycerol pH 7.3.

Aliquoting is unnecessary for -20°C storage

*** 20ul sizes contain 0.1% BSA

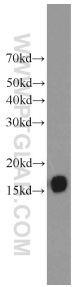
For technical support and original validation data for this product please contact:

T: 1 (888) 4PTGLAB (1-888-478-4522) (toll free in USA), or 1(312) 455-8498 (outside USA)

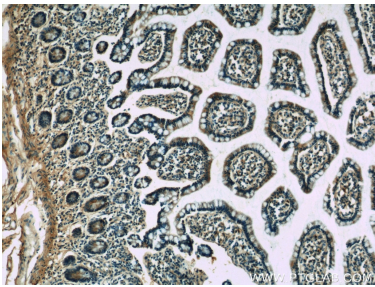
E: proteintech@ptglab.com
W: ptglab.com

This product is exclusively available under Proteintech Group brand and is not available to purchase from any other manufacturer.

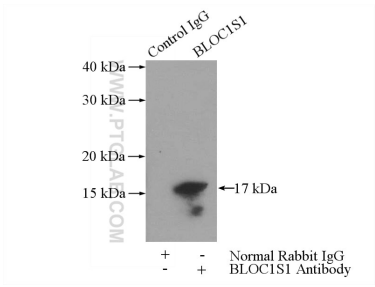
Selected Validation Data



human brain tissue were subjected to SDS PAGE followed by western blot with 19687-1-AP (BLOC1S1-Specific antibody) at dilution of 1:1000 incubated at room temperature for 1.5 hours.



Immunohistochemical analysis of paraffin-embedded human small intestine slide using 19687-1-AP (BLOC1S1-Specific Antibody) at dilution of 1:50.



IP result of anti-BLOC1S1-Specific (IP:19687-1-AP, 3ug; Detection:19687-1-AP 1:1000) with mouse brain tissue lysate 4000ug.