

For Research Use Only

# Kv1.4-Specific Polyclonal antibody

Catalog Number: 19697-1-AP **3 Publications**



## Basic Information

<b>Catalog Number:</b> 19697-1-AP	<b>GenBank Accession Number:</b> NM_002233	<b>Purification Method:</b> Antigen affinity purification
<b>Size:</b> 150ul, Concentration: 260 µg/ml by Nanodrop and 233 µg/ml by Bradford method using BSA as the standard;	<b>GeneID (NCBI):</b> 3739	<b>Recommended Dilutions:</b> WB 1:500-1:1000
<b>Source:</b> Rabbit	<b>Full Name:</b> potassium voltage-gated channel, shaker-related subfamily, member 4	
<b>Isotype:</b> IgG	<b>Calculated MW:</b> 73 kDa	
	<b>Observed MW:</b> 73 kDa	

## Applications

<b>Tested Applications:</b> WB, ELISA	<b>Positive Controls:</b> WB: mouse liver tissue,
<b>Cited Applications:</b> WB	
<b>Species Specificity:</b> human, mouse, rat	
<b>Cited Species:</b> rat	

## Background Information

KCNA4, also named as KCNA4L, HBK4, HUK1, HK1 and HPCN2, belongs to the potassium channel family and A (Shaker) subfamily. KCNA4 mediates the voltage-dependent potassium ion permeability of excitable membranes. Assuming opened or closed conformations in response to the voltage difference across the membrane, the protein forms a potassium-selective channel through which potassium ions may pass in accordance with their electrochemical gradient. The antibody is specific to KCNA4.

## Notable Publications

Author	Pubmed ID	Journal	Application
Xue Liu	27322747	Cell Physiol Biochem	WB
Yi Guan	30506890	J Cell Mol Med	WB
Xueting Gao	34409458	J Cell Sci	WB

## Storage

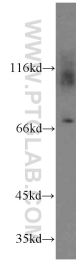
**Storage:**  
Store at -20°C. Stable for one year after shipment.  
**Storage Buffer:**  
PBS with 0.02% sodium azide and 50% glycerol pH 7.3.  
Aliquoting is unnecessary for -20°C storage

\*\*\* 20ul sizes contain 0.1% BSA

For technical support and original validation data for this product please contact:  
T: 1 (888) 4PTGLAB (1-888-478-4522) (toll free in USA), or 1(312) 455-8498 (outside USA) E: proteintech@ptglab.com W: ptglab.com

This product is exclusively available under Proteintech Group brand and is not available to purchase from any other manufacturer.

## Selected Validation Data



mouse liver tissue were subjected to SDS PAGE followed by western blot with 19697-1-AP (Kv1.4-Specific antibody) at dilution of 1:500 incubated at room temperature for 1.5 hours.