

For Research Use Only

LAMC2 Polyclonal antibody

Catalog Number: 19698-1-AP

10 Publications



Basic Information

Catalog Number:

19698-1-AP

Size:

150ul, Concentration: 900 ug/ml by Nanodrop and 413 ug/ml by Bradford method using BSA as the standard;

Source:

Rabbit

Isotype:

IgG

GenBank Accession Number:

NM_005562

GeneID (NCBI):

3918

UNIPROT ID:

Q13753

Full Name:

laminin, gamma 2

Calculated MW:

131 kDa

Observed MW:

140 kDa

Purification Method:

Antigen affinity purification

Recommended Dilutions:

WB: 1:500-1:1000

Applications

Tested Applications:

WB, ELISA

Cited Applications:

WB, IHC, IF

Species Specificity:

human, mouse, rat

Cited Species:

human, mouse, rat

Positive Controls:

WB : A431 cells,

Background Information

LAMC2, also named as LAMB2T and LAMNB2, is thought to mediate the attachment, migration and organization of cells into tissues during embryonic development by interacting with other extracellular matrix components. LAMC2 binds to cells via a high affinity receptor. Laminin exerts cell-scattering activity toward a wide variety of cells, including epithelial, endothelial, and fibroblastic cells.

Notable Publications

| Author | Pubmed ID | Journal | Application |
|-----------------|-----------|----------------|-------------|
| Giricea Lorusso | 36070364 | Sci Transl Med | WB,IHC |
| Caiqun Huang | 33179081 | Mol Med Rep | WB |
| Caiming Xu | 32244009 | J Proteomics | WB |

Storage

Storage:

Store at -20°C. Stable for one year after shipment.

Storage Buffer:

PBS with 0.02% sodium azide and 50% glycerol, pH7.3

Aliquoting is unnecessary for -20°C storage

*** 20ul sizes contain 0.1% BSA

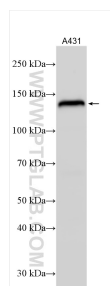
For technical support and original validation data for this product please contact:

T: 1 (888) 4PTGLAB (1-888-478-4522) (toll free in USA), or 1(312) 455-8498 (outside USA)

E: proteintech@ptglab.com
W: ptglab.com

This product is exclusively available under Proteintech Group brand and is not available to purchase from any other manufacturer.

Selected Validation Data



A431 cells were subjected to SDS PAGE followed by western blot with 19698-1-AP (LAMC2 antibody) at dilution of 1:800 incubated at room temperature for 1.5 hours.