

For Research Use Only

# LIMK1 Polyclonal antibody

Catalog Number: 19699-1-AP

9 Publications



## Basic Information

### Catalog Number:

19699-1-AP

### Size:

150ul, Concentration: 350 ug/ml by Nanodrop and 187 ug/ml by Bradford method using BSA as the standard;

### Source:

Rabbit

### Isotype:

IgG

### GenBank Accession Number:

NM\_002314

### GeneID (NCBI):

3984

### UNIPROT ID:

P53667

### Full Name:

LIM domain kinase 1

### Calculated MW:

73 kDa

### Purification Method:

Antigen affinity purification

### Recommended Dilutions:

IHC 1:20-1:200

IF/ICC 1:200-1:800

## Applications

### Tested Applications:

IHC, IF/ICC, ELISA

### Cited Applications:

IHC, IP

### Species Specificity:

human, mouse

### Cited Species:

human, mouse

**Note-IHC: suggested antigen retrieval with TE buffer pH 9.0; (\*) Alternatively, antigen retrieval may be performed with citrate buffer pH 6.0**

### Positive Controls:

IHC : human heart tissue, human brain tissue

IF/ICC : HeLa cells,

## Background Information

LIMK1, also named LIMK, belongs to the protein kinase superfamily and TKL Ser/Thr protein kinase family. LIMK1 is a protein kinase which regulates actin filament dynamics. Phosphorylates and inactivates the actin binding/depolymerizing factor cofilin, thereby stabilizing the actin cytoskeleton. Isoform 3 has a dominant negative effect on actin cytoskeletal changes. LIMK1 may be involved in brain development. The antibody has no cross-reaction with LIMK2.

## Notable Publications

Author	Pubmed ID	Journal	Application
Xiufang Yang	33760158	Oncol Rep	IHC
Yue Zhang	29970879	Cell Death Dis	
Nengquan Sheng	28440035	Cancer Med	

## Storage

### Storage:

Store at -20°C. Stable for one year after shipment.

### Storage Buffer:

PBS with 0.02% sodium azide and 50% glycerol pH 7.3.

Aliquoting is unnecessary for -20°C storage

\*\*\* 20ul sizes contain 0.1% BSA

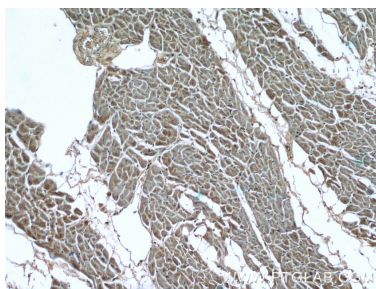
For technical support and original validation data for this product please contact:

T: 1 (888) 4PTGLAB (1-888-478-4522) (toll free in USA), or 1(312) 455-8498 (outside USA)

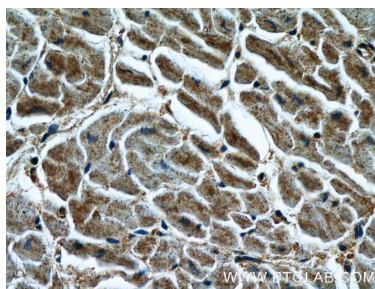
E: [proteintech@ptglab.com](mailto:proteintech@ptglab.com)  
W: [ptglab.com](http://ptglab.com)

This product is exclusively available under Proteintech Group brand and is not available to purchase from any other manufacturer.

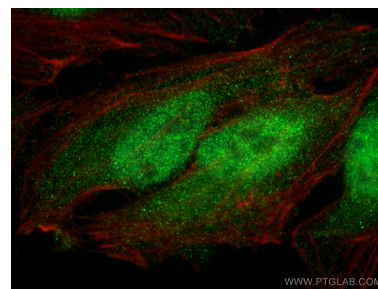
## Selected Validation Data



Immunohistochemical analysis of paraffin-embedded human heart tissue slide using 19699-1-AP (LIMK1 Antibody) at dilution of 1:200 (under 10x lens).



Immunohistochemical analysis of paraffin-embedded human heart tissue slide using 19699-1-AP (LIMK1 Antibody) at dilution of 1:200 (under 40x lens).



Immunofluorescent analysis of (4% PFA) fixed HeLa cells using LIMK1 antibody (19699-1-AP) at dilution of 1:400 and Multi-rAb CoraLite® Plus 488-Goat Anti-Rabbit Recombinant Secondary Antibody (H+L) (RGAR002), CL594-Phalloidin (red).