

For Research Use Only

LRP2-Specific Polyclonal antibody

Catalog Number: 19700-1-AP

Featured Product

17 Publications



Basic Information

Catalog Number:

19700-1-AP

Size:

150ul, Concentration: 900 ug/ml by Nanodrop;

Source:

Rabbit

Isotype:

IgG

GenBank Accession Number:

NM_004525

GeneID (NCBI):

4036

UNIPROT ID:

P98164

Full Name:

low density lipoprotein-related protein 2

Calculated MW:

522 kDa

Observed MW:

522 kDa

Purification Method:

Antigen affinity purification

Recommended Dilutions:

WB 1:2000-1:10000

IHC 1:4000-1:16000

IF-P 1:50-1:500

Applications

Tested Applications:

WB, IHC, IF-P, ELISA

Cited Applications:

WB, IHC, IF

Species Specificity:

human, mouse

Cited Species:

human, mouse, rat

Note-IHC: suggested antigen retrieval with TE buffer pH 9.0; (*) Alternatively, antigen retrieval may be performed with citrate buffer pH 6.0

Positive Controls:

WB: mouse kidney tissue,

IHC: human kidney tissue,

IF-P: human kidney tissue,

Background Information

LRP2, also named as gp330 and Megalin, belongs to the LDLR family. It acts together with cubilin to mediate HDL endocytosis. LRP2 may participate in regulation of parathyroid hormone and para-thyroid-hormone-related protein release. Defects in LRP2 are the cause of Donnai-Barrow syndrome (DBS).

Notable Publications

Author	Pubmed ID	Journal	Application
Yushi Uchida	34541900	Am J Physiol Renal Physiol	WB
Hitomi Otomo	33069809	Metabolism	IHC,IF
Junqiu He	32464235	Int J Pharm	IHC

Storage

Storage:

Store at -20°C. Stable for one year after shipment.

Storage Buffer:

PBS with 0.02% sodium azide and 50% glycerol pH 7.3.

Aliquoting is unnecessary for -20°C storage

*** 20ul sizes contain 0.1% BSA

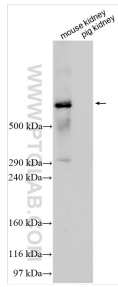
For technical support and original validation data for this product please contact:

T: 1 (888) 4PTGLAB (1-888-478-4522) (toll free in USA), or 1(312) 455-8498 (outside USA)

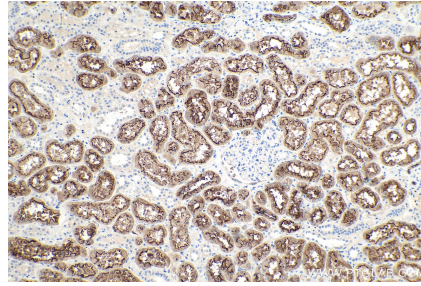
E: proteintech@ptglab.com
W: ptglab.com

This product is exclusively available under Proteintech Group brand and is not available to purchase from any other manufacturer.

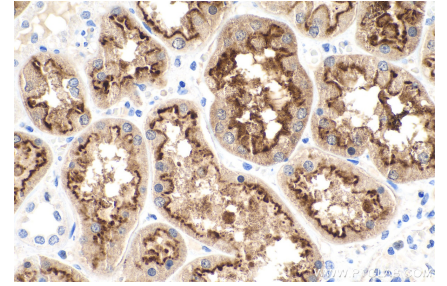
Selected Validation Data



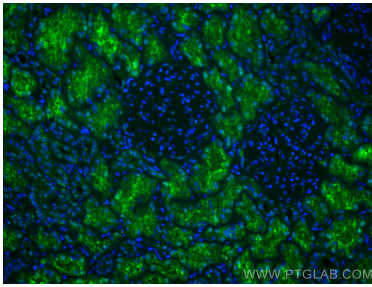
Various lysates were subjected to SDS PAGE followed by western blot with 19700-1-AP (LRP2-Specific antibody) at dilution of 1:5000 incubated at room temperature for 1.5 hours.



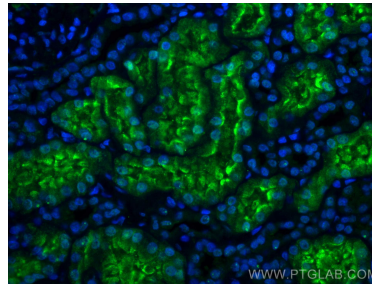
Immunohistochemical analysis of paraffin-embedded human kidney tissue slide using 19700-1-AP (LRP2-Specific antibody) at dilution of 1:8000 (under 10x lens). Heat mediated antigen retrieval with Tris-EDTA buffer (pH 9.0).



Immunohistochemical analysis of paraffin-embedded human kidney tissue slide using 19700-1-AP (LRP2-Specific antibody) at dilution of 1:8000 (under 40x lens). Heat mediated antigen retrieval with Tris-EDTA buffer (pH 9.0).



Immunofluorescent analysis of (4% PFA) fixed human kidney tissue using LRP2-Specific antibody (19700-1-AP) at dilution of 1:200 and CoraLite®488-Conjugated AffiniPure Goat Anti-Rabbit IgG(H+L).



Immunofluorescent analysis of (4% PFA) fixed human kidney tissue using LRP2-Specific antibody (19700-1-AP) at dilution of 1:200 and CoraLite®488-Conjugated AffiniPure Goat Anti-Rabbit IgG(H+L).