

For Research Use Only

# NEB-Specific Polyclonal antibody

Catalog Number: 19706-1-AP

2 Publications



## Basic Information

Catalog Number:

19706-1-AP

Size:

150ul , Concentration: 450 ug/ml by Nanodrop;

Source:

Rabbit

Isotype:

IgG

GenBank Accession Number:

NM\_004543

GeneID (NCBI):

4703

UNIPROT ID:

P20929

Full Name:

nebulin

Calculated MW:

773 kDa

Purification Method:

Antigen affinity purification

Recommended Dilutions:

IHC 1:20-1:200

## Applications

Tested Applications:

IHC, ELISA

Cited Applications:

WB

Species Specificity:

human, mouse, rat

Cited Species:

human, mouse

**Note-IHC: suggested antigen retrieval with TE buffer pH 9.0; (\*) Alternatively, antigen retrieval may be performed with citrate buffer pH 6.0**

Positive Controls:

IHC : human skeletal muscle tissue,

## Background Information

NEB, a giant muscle protein, may be involved in maintaining the structural integrity of sarcomeres and the membrane system associated with the myofibrils. NEB binds and stabilizes F-actin. Defects in NEB are the cause of nemaline myopathy type 2 (NEM2). The antibody is specific to NEB.

## Notable Publications

Author	Pubmed ID	Journal	Application
Ankit Garg	24960163	J Clin Invest	WB
Andres Ramirez-Martinez	28826497	Elife	WB

## Storage

Storage:

Store at -20°C. Stable for one year after shipment.

Storage Buffer:

PBS with 0.02% sodium azide and 50% glycerol pH 7.3.

Aliquoting is unnecessary for -20°C storage

\*\*\* 20ul sizes contain 0.1% BSA

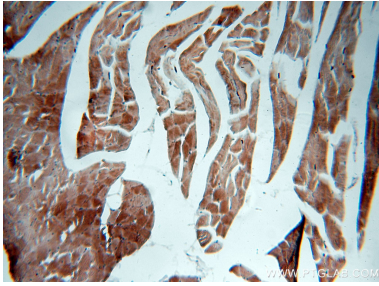
For technical support and original validation data for this product please contact:

T: 1 (888) 4PTGLAB (1-888-478-4522) (toll free in USA), or 1(312) 455-8498 (outside USA)

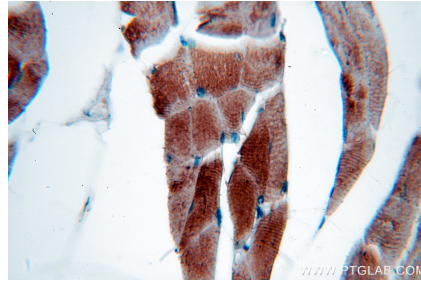
E: [proteintech@ptglab.com](mailto:proteintech@ptglab.com)  
W: [ptglab.com](http://ptglab.com)

This product is exclusively available under Proteintech Group brand and is not available to purchase from any other manufacturer.

## Selected Validation Data



Immunohistochemical analysis of paraffin-embedded human skeletal muscle using 19706-1-AP (NEB-Specific antibody) at dilution of 1:50 (under 10x lens).



Immunohistochemical analysis of paraffin-embedded human skeletal muscle using 19706-1-AP (NEB-Specific antibody) at dilution of 1:50 (under 40x lens).