

For Research Use Only

# persephin-Specific Polyclonal antibody

Catalog Number: 19713-1-AP

1 Publications



## Basic Information

### Catalog Number:

19713-1-AP

### Size:

150ul, Concentration: 600 ug/ml by Nanodrop and 380 ug/ml by Bradford method using BSA as the standard;

### Source:

Rabbit

### Isotype:

IgG

### GenBank Accession Number:

NM\_004158

### GeneID (NCBI):

5623

### UNIPROT ID:

O60542

### Full Name:

persephin

### Calculated MW:

17 kDa

### Observed MW:

17 kDa

### Purification Method:

Antigen affinity purification

### Recommended Dilutions:

WB 1:500-1:1000

IHC 1:50-1:500

IF/ICC 1:200-1:800

## Applications

### Tested Applications:

WB, IHC, IF/ICC, ELISA

### Cited Applications:

WB

### Species Specificity:

human

**Note-IHC: suggested antigen retrieval with TE buffer pH 9.0; (\*) Alternatively, antigen retrieval may be performed with citrate buffer pH 6.0**

### Positive Controls:

WB : SH-SY5Y cells, HepG2 cells

IHC : human colon cancer tissue, human brain tissue, human ovary cancer tissue

IF/ICC : SH-SY5Y cells,

## Background Information

PSPN, also named as PSP, belongs to the TGF-beta family and GDNF subfamily. PSPN exhibits neurotrophic activity on mesencephalic dopaminergic and motor neurons. The antibody is specific to PSPN.

## Notable Publications

Author	Pubmed ID	Journal	Application
Kathryn Stein	28248428	Biol Cell	WB

## Storage

### Storage:

Store at -20°C. Stable for one year after shipment.

### Storage Buffer:

PBS with 0.02% sodium azide and 50% glycerol, pH7.3

Aliquoting is unnecessary for -20°C storage

\*\*\* 20ul sizes contain 0.1% BSA

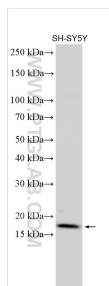
For technical support and original validation data for this product please contact:

T: 1 (888) 4PTGLAB (1-888-478-4522) (toll free in USA), or 1(312) 455-8498 (outside USA)

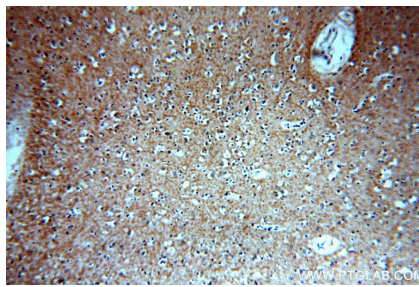
E: [proteintech@ptglab.com](mailto:proteintech@ptglab.com)  
W: [ptglab.com](http://ptglab.com)

This product is exclusively available under Proteintech Group brand and is not available to purchase from any other manufacturer.

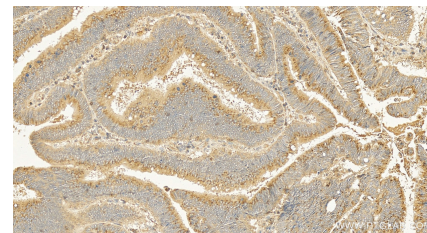
## Selected Validation Data



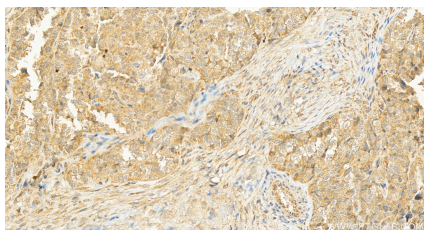
SH-SY5Y cells were subjected to SDS PAGE followed by western blot with 19713-1-AP (persephin-Specific antibody) at dilution of 1:500 incubated at room temperature for 1.5 hours.



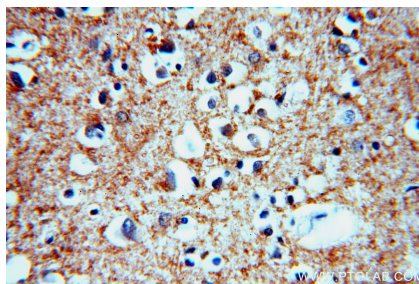
Immunohistochemical analysis of paraffin-embedded human brain using 19713-1-AP (persephin-Specific antibody) at dilution of 1:50 (under 10x lens).



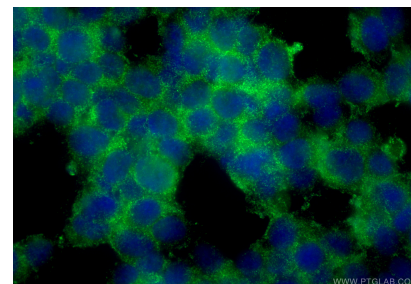
Immunohistochemical analysis of paraffin-embedded human colon cancer tissue slide using 19713-1-AP (persephin-Specific antibody) at dilution of 1:200 (under 20x lens). Heat mediated antigen retrieval with Tris-EDTA buffer (pH 9.0).



Immunohistochemical analysis of paraffin-embedded human ovary cancer tissue slide using 19713-1-AP (persephin-Specific antibody) at dilution of 1:200 (under 20x lens). Heat mediated antigen retrieval with Tris-EDTA buffer (pH 9.0).



Immunohistochemical analysis of paraffin-embedded human brain using 19713-1-AP (persephin-Specific antibody) at dilution of 1:50 (under 40x lens).



Immunofluorescent analysis of (-20°C Ethanol) fixed SH-SY5Y cells using persephin-Specific antibody (19713-1-AP) at dilution of 1:400 and Coralite®488-Conjugated Goat Anti-Rabbit IgG(H+L) (SA00013-2).