

For Research Use Only

# PYGM-Specific Polyclonal antibody

Catalog Number: 19716-1-AP

Featured Product

10 Publications



## Basic Information

### Catalog Number:

19716-1-AP

### Size:

150ul, Concentration: 600 ug/ml by Nanodrop and 333 ug/ml by Bradford method using BSA as the standard;

### Source:

Rabbit

### Isotype:

IgG

### GenBank Accession Number:

NM\_005609

### GeneID (NCBI):

5837

### UNIPROT ID:

P11217

### Full Name:

phosphorylase, glycogen, muscle

### Calculated MW:

97 kDa

### Observed MW:

97-105 kDa

### Purification Method:

Antigen affinity purification

### Recommended Dilutions:

WB 1:2000-1:10000

IHC 1:20-1:200

IF/ICC 1:200-1:800

## Applications

### Tested Applications:

WB, IHC, IF/ICC, ELISA

### Cited Applications:

WB, IHC

### Species Specificity:

human, mouse, rat

### Cited Species:

human, mouse, pig

**Note-IHC: suggested antigen retrieval with TE buffer pH 9.0; (\*) Alternatively, antigen retrieval may be performed with citrate buffer pH 6.0**

### Positive Controls:

WB : mouse heart tissue, rat heart

IHC : human skeletal muscle tissue, human liver tissue

IF/ICC : HepG2 cells,

## Background Information

PYGM belongs to the glycogen phosphorylase family. Phosphorylase is an important allosteric enzyme in carbohydrate metabolism. Enzymes from different sources differ in their regulatory mechanisms and in their natural substrates. However, all known phosphorylases share catalytic and structural properties. Defects in PYGM are the cause of glycogen storage disease type 5 (GSD5) which also known as McArdle disease. The antibody is specific to PYGM.

## Notable Publications

Author	Pubmed ID	Journal	Application
Omer Keinan	34707293	Nature	WB
Jia-Hua Qu	36359893	Cells	WB
Lingyu Jiang	35761940	Oncol Lett	WB

## Storage

### Storage:

Store at -20°C. Stable for one year after shipment.

### Storage Buffer:

PBS with 0.02% sodium azide and 50% glycerol pH 7.3.

Aliquoting is unnecessary for -20°C storage

\*\*\* 20ul sizes contain 0.1% BSA

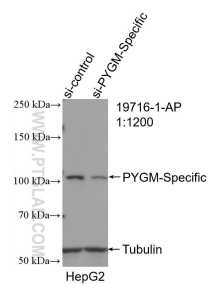
For technical support and original validation data for this product please contact:

T: 1 (888) 4PTGLAB (1-888-478-4522) (toll free in USA), or 1(312) 455-8498 (outside USA)

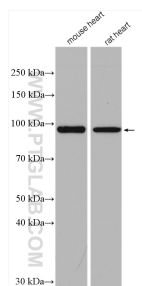
E: [proteintech@ptglab.com](mailto:proteintech@ptglab.com)  
W: [ptglab.com](http://ptglab.com)

This product is exclusively available under Proteintech Group brand and is not available to purchase from any other manufacturer.

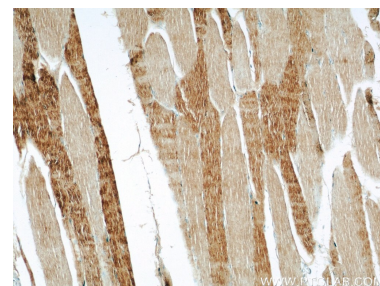
## Selected Validation Data



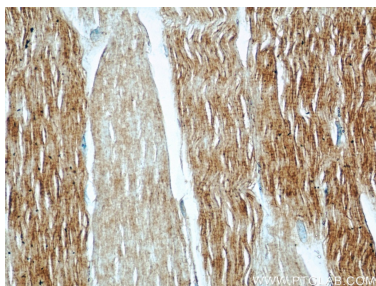
WB result of PYGM-Specific antibody (19716-1-AP; 1:1200; incubated at room temperature for 1.5 hours) with sh-Control and sh-PYGM-Specific transfected HepG2 cells.



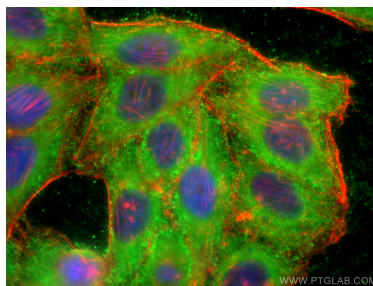
Various lysates were subjected to SDS PAGE followed by western blot with 19716-1-AP (PYGM-Specific antibody) at dilution of 1:5000 incubated at room temperature for 1.5 hours.



Immunohistochemical analysis of paraffin-embedded human skeletal muscle using 19716-1-AP (PYGM-Specific antibody) at dilution of 1:50 (under 10x lens).



Immunohistochemical analysis of paraffin-embedded human skeletal muscle using 19716-1-AP (PYGM-Specific antibody) at dilution of 1:50 (under 40x lens).



Immunofluorescent analysis of (-20°C Ethanol) fixed HepG2 cells using PYGM-Specific antibody (19716-1-AP) at dilution of 1:400 and CoraLite® 488-Conjugated Goat Anti-Rabbit IgG(H+L) (SA00013-2), CL594-phalloidin (red).