

For Research Use Only

TMF1-Specific Polyclonal antibody

Catalog Number: 19728-1-AP

2 Publications



Basic Information

Catalog Number:

19728-1-AP

Size:

150ul, Concentration: 600 ug/ml by Nanodrop and 350 ug/ml by Bradford method using BSA as the standard;

Source:

Rabbit

Isotype:

IgG

GenBank Accession Number:

NM_007114

GeneID (NCBI):

7110

UNIPROT ID:

P82094

Full Name:

TATA element modulatory factor 1

Calculated MW:

123 kDa

Observed MW:

150-160 kDa

Purification Method:

Antigen affinity purification

Recommended Dilutions:

WB 1:500-1:2000

IP 0.5-4.0 ug for 1.0-3.0 mg of total protein lysate

IHC 1:50-1:500

IF/ICC 1:50-1:500

Applications

Tested Applications:

WB, IHC, IF/ICC, IP, ELISA

Cited Applications:

WB, IF

Species Specificity:

human

Cited Species:

human

Note-IHC: suggested antigen retrieval with TE buffer pH 9.0; (*) Alternatively, antigen retrieval may be performed with citrate buffer pH 6.0

Positive Controls:

WB : BxPC-3 cells, LO2 cells, Hela cells, HepG2 cells

IP : HepG2 cells,

IHC : human cervical cancer tissue, human testis tissue

IF/ICC : HepG2 cells,

Background Information

TMF1, also named as ARA160, is a potential coactivator of the androgen receptor. TMF1 mediates STAT3 degradation. TMF1 plays critical roles in two RAB6-dependent retrograde transport processes: one from endosomes to the Golgi and the other from the Golgi to the ER. TMF1 binds the HIV-1 TATA element and inhibits transcriptional activation by the TATA-binding protein (TBP). The antibody is specific to TMF1. TMF1 can be detected as 150-160 kDa after posttranslational modification.

Notable Publications

Author	Pubmed ID	Journal	Application
Jordy J Hsiao	27365400	J Biol Chem	WB
Julian Nüchel	34245671	Mol Cell	WB,IF

Storage

Storage:

Store at -20°C. Stable for one year after shipment.

Storage Buffer:

PBS with 0.02% sodium azide and 50% glycerol pH 7.3.

Aliquoting is unnecessary for -20°C storage

*** 20ul sizes contain 0.1% BSA

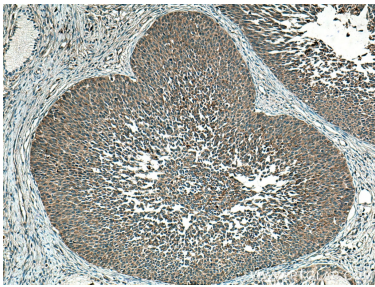
For technical support and original validation data for this product please contact:

T: 1 (888) 4PTGLAB (1-888-478-4522) (toll free in USA), or 1(312) 455-8498 (outside USA)

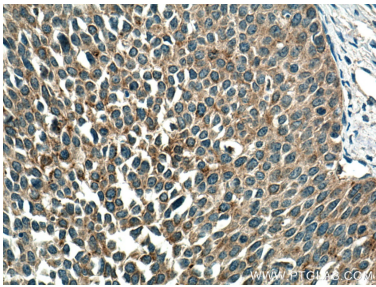
E: proteintech@ptglab.com
W: ptglab.com

This product is exclusively available under Proteintech Group brand and is not available to purchase from any other manufacturer.

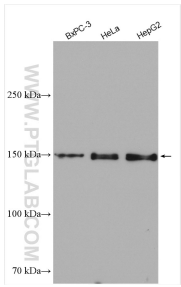
Selected Validation Data



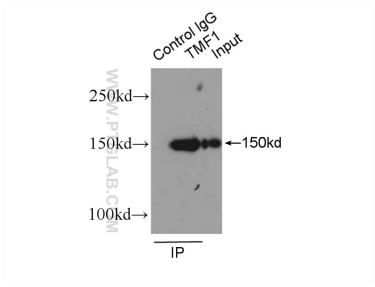
Immunohistochemical analysis of paraffin-embedded human cervical cancer tissue slide using 19728-1-AP (TMF1-Specific antibody) at dilution of 1:200 (under 10x lens). Heat mediated antigen retrieval with Tris-EDTA buffer (pH 9.0).



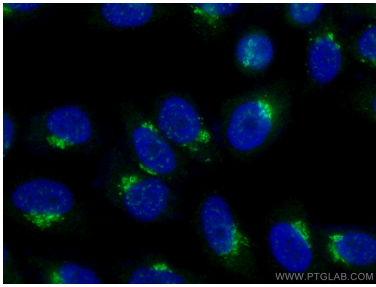
Immunohistochemical analysis of paraffin-embedded human cervical cancer tissue slide using 19728-1-AP (TMF1-Specific antibody) at dilution of 1:200 (under 40x lens). Heat mediated antigen retrieval with Tris-EDTA buffer (pH 9.0).



Various lysates were subjected to SDS PAGE followed by western blot with 19728-1-AP (TMF1-Specific antibody) at dilution of 1:1000 incubated at room temperature for 1.5 hours.



IP result of anti-TMF1-Specific (IP:19728-1-AP, 4ug; Detection:19728-1-AP 1:300) with HepG2 cells lysate 3600ug.



Immunofluorescent analysis of (-20°C Ethanol) fixed HepG2 cells using 19728-1-AP (TMF1-Specific antibody) at dilution of 1:100 and CoraLite488-Conjugated Goat Anti-Rabbit IgG(H+L).