

For Research Use Only

GPR50 Polyclonal antibody

Catalog Number: 19762-1-AP

Featured Product

7 Publications



Basic Information

Catalog Number: 19762-1-AP	GenBank Accession Number: NM_004224	Purification Method: Antigen affinity purification
Size: 150ul, Concentration: 1000 ug/ml by Nanodrop and 333 ug/ml by Bradford method using BSA as the standard;	GeneID (NCBI): 9248	Recommended Dilutions: IHC 1:20-1:200 IF-P 1:50-1:500 IF/ICC 1:100-1:500
Source: Rabbit	UNIPROT ID: Q13585	
Isotype: IgG	Full Name: G protein-coupled receptor 50	
	Calculated MW: 67 kDa	

Applications

Tested Applications: IHC, IF/ICC, IF-P, ELISA	Positive Controls:
Cited Applications: WB, IHC, IF, IP	IHC: mouse brain tissue,
Species Specificity: human, mouse	IF-P: mouse brain tissue,
Cited Species: human, mouse	IF/ICC: SH-SY5Y cells,

Note-IHC: suggested antigen retrieval with **TE buffer pH 9.0**; (*) Alternatively, antigen retrieval may be performed with **citrate buffer pH 6.0**

Background Information

GPR50, also known as Melatonin-related receptor or H9, is a member of the G-protein coupled receptor 1 family. It is closely related to the G protein-coupled melatonin receptor family and has been demonstrated as the mammalian ortholog of Mel1c receptor (PMID: 8647286; 18400093). GPR50 does not bind melatonin. It is able to heterodimerize with both the MT1 (Mel1a) and MT2 (Mel1b) melatonin receptor subtypes. While GPR50 has no effect on MT2 function, GPR50 prevented MT1 from both binding melatonin and coupling to G proteins. GPR50 is involved in neuroendocrine function and plays a role in the regulation of energy metabolism (PMID: 8647286; 17957037).

Notable Publications

Author	Pubmed ID	Journal	Application
Danli Lu	36181629	Transl Stroke Res	WB,IP
Boris Simonetti	31576058	Nat Cell Biol	WB
Zhenyu Yao	36333974	FEBS Open Bio	WB

Storage

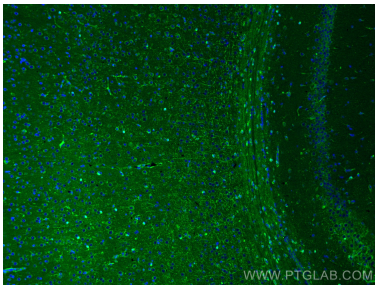
Storage:
Store at -20°C. Stable for one year after shipment.
Storage Buffer:
PBS with 0.02% sodium azide and 50% glycerol pH 7.3.
Aliquoting is unnecessary for -20°C storage

*** 20ul sizes contain 0.1%BSA

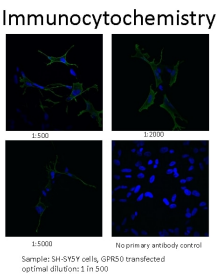
For technical support and original validation data for this product please contact:
T: 1 (888) 4PTGLAB (1-888-478-4522) (toll free in USA), or 1(312) 455-8498 (outside USA)
E: proteintech@ptglab.com
W: ptglab.com

This product is exclusively available under Proteintech Group brand and is not available to purchase from any other manufacturer.

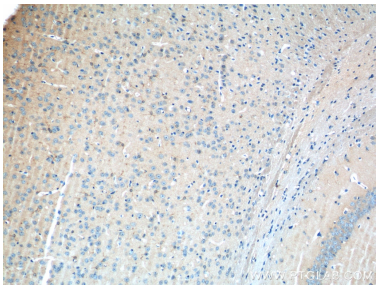
Selected Validation Data



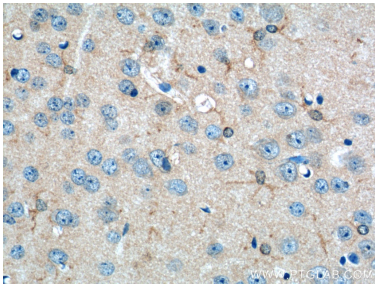
Immunofluorescent analysis of (4% PFA) fixed mouse brain tissue using GPR50 antibody (19762-1-AP) at dilution of 1:200 and CoraLite®488-Conjugated Goat Anti-Rabbit IgG(H+L).



IF result of anti-GPR50 (19762-1-AP, 1:500) with SH-SY5Y cells transfected with GPR50 by Dr. Qian Li, University of Edinburgh.



Immunohistochemical analysis of paraffin-embedded mouse brain tissue slide using 19762-1-AP (GPR50 Antibody) at dilution of 1:50 (under 10x lens).



Immunohistochemical analysis of paraffin-embedded mouse brain tissue slide using 19762-1-AP (GPR50 Antibody) at dilution of 1:50 (under 40x lens).