

For Research Use Only

TLR4 Polyclonal antibody

Catalog Number: 19811-1-AP

Featured Product

611 Publications



Basic Information

Catalog Number:

19811-1-AP

Size:

150ul, Concentration: 500 ug/ml by Nanodrop;

Source:

Rabbit

Isotype:

IgG

Immunogen Catalog Number:

AG13841

GenBank Accession Number:

BC117422

GeneID (NCBI):

7099

UNIPROT ID:

O00206

Full Name:

toll-like receptor 4

Calculated MW:

839 aa, 96 kDa

Observed MW:

90-110 kDa

Purification Method:

Antigen affinity purification

Recommended Dilutions:

WB: 1:1000-1:4000

IHC: 1:100-1:400

Applications

Tested Applications:

WB, IHC, ELISA

Cited Applications:

WB, IHC, IF, IP, CoIP, ChIP, ELISA, Microtiter plate binding assay

Species Specificity:

human, mouse, rat

Cited Species:

human, mouse, rat, pig, rabbit, canine, chicken, zebrafish, bovine, hamster

Note-IHC: suggested antigen retrieval with TE buffer pH 9.0; (*) Alternatively, antigen retrieval may be performed with citrate buffer pH 6.0

Positive Controls:

WB: mouse liver tissue, J774A.1 cells, NIH/3T3 cells, RAW 264.7 cells

IHC: human placenta tissue, mouse brain tissue, human liver cancer tissue, human colon tissue

Background Information

TLR4, also named CD284, belongs to the Toll-like receptor family. TLR4 interacts with LY96 and CD14 to mediate the innate immune response to bacterial lipopolysaccharide (LPS). TLR4 acts via MYD88, TIRAP, and TRAF6, leading to NF- κ B activation, cytokine secretion, and the inflammatory response. Three alternatively spliced transcript variants that encode different protein isoforms have been described. The calculated molecular weights of the three TLR4 isoforms are 96, 91, and 73 kDa.

Notable Publications

Author	Pubmed ID	Journal	Application
Chang Liu	36230117	Foods	WB
Ying Tu	36155221	Environ Pollut	WB
Haihua Zhang	33182056	Int Immunopharmacol	WB

Storage

Storage:

Store at -20°C. Stable for one year after shipment.

Storage Buffer:

PBS with 0.02% sodium azide and 50% glycerol, pH7.3

Aliquoting is unnecessary for -20°C storage

*** 20ul sizes contain 0.1% BSA

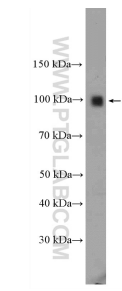
For technical support and original validation data for this product please contact:

T: 1 (888) 4PTGLAB (1-888-478-4522) (toll free in USA), or 1(312) 455-8498 (outside USA)

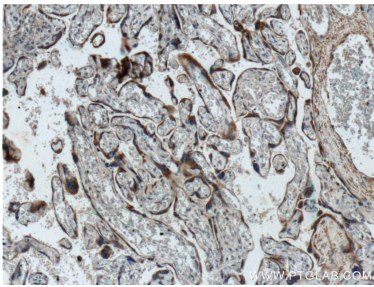
E: proteintech@ptglab.com
W: ptglab.com

This product is exclusively available under Proteintech Group brand and is not available to purchase from any other manufacturer.

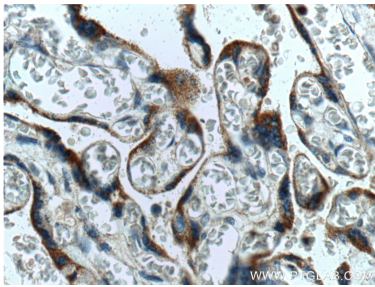
Selected Validation Data



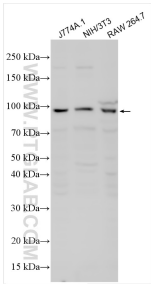
mouse liver tissue were subjected to SDS PAGE followed by western blot with 19811-1-AP (TLR4 Antibody) at dilution of 1:2000 incubated at room temperature for 1.5 hours.



Immunohistochemical analysis of paraffin-embedded human placenta tissue slide using 19811-1-AP (TLR4 Antibody) at dilution of 1:200 (under 10x lens).



Immunohistochemical analysis of paraffin-embedded human placenta tissue slide using 19811-1-AP (TLR4 Antibody) at dilution of 1:200 (under 40x lens).



Various lysates were subjected to SDS PAGE followed by western blot with 19811-1-AP (TLR4 antibody) at dilution of 1:1000 incubated at room temperature for 1.5 hours.