

For Research Use Only

hIST1 Polyclonal antibody

Catalog Number: 19842-1-AP

10 Publications



Basic Information

Catalog Number:

19842-1-AP

Size:

150ul, Concentration: 600 ug/ml by Nanodrop;

Source:

Rabbit

Isotype:

IgG

Immunogen Catalog Number:

AG13874

GenBank Accession Number:

BC000116

GeneID (NCBI):

9798

UNIPROT ID:

P53990

Full Name:

KIAA0174

Calculated MW:

364 aa, 40 kDa

Observed MW:

40 kDa

Purification Method:

Antigen affinity purification

Recommended Dilutions:

WB 1:5000-1:50000

IHC 1:20-1:200

IF/ICC 1:10-1:100

Applications

Tested Applications:

WB, IHC, IF/ICC, ELISA

Cited Applications:

WB, IF, CoIP, RIP

Species Specificity:

human, mouse, rat

Cited Species:

human, mouse

Note-IHC: suggested antigen retrieval with TE buffer pH 9.0; (*) Alternatively, antigen retrieval may be performed with citrate buffer pH 6.0

Positive Controls:

WB: HeLa cells, mouse liver tissue, mouse brain tissue, PC-3 cells

IHC: human kidney tissue, human hepatocirrhosis tissue

IF/ICC: HepG2 cells,

Notable Publications

Author	Pubmed ID	Journal	Application
Jay Xiaojun Tan	36071159	Nature	WB,IF
Ekansh Mittal	30482832	MBio	
Oliver B Davis	33308480	Dev Cell	WB

Storage

Storage:

Store at -20°C. Stable for one year after shipment.

Storage Buffer:

PBS with 0.02% sodium azide and 50% glycerol pH 7.3.

Aliquoting is unnecessary for -20°C storage

*** 20ul sizes contain 0.1% BSA

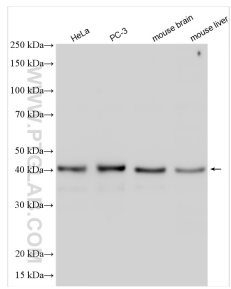
For technical support and original validation data for this product please contact:

T: 1 (888) 4PTGLAB (1-888-478-4522) (toll free in USA), or 1(312) 455-8498 (outside USA)

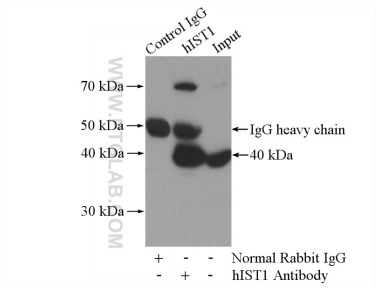
E: proteintech@ptglab.com
W: ptglab.com

This product is exclusively available under Proteintech Group brand and is not available to purchase from any other manufacturer.

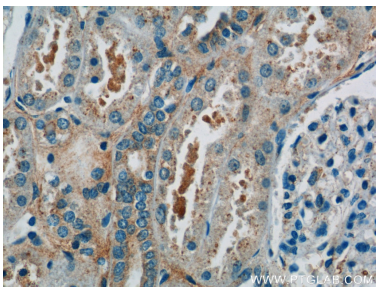
Selected Validation Data



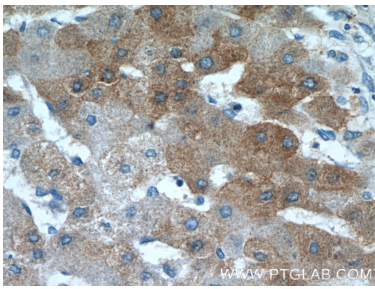
Various lysates were subjected to SDS PAGE followed by western blot with 19842-1-AP (hIST1 antibody) at dilution of 1:15000 incubated at room temperature for 1.5 hours.



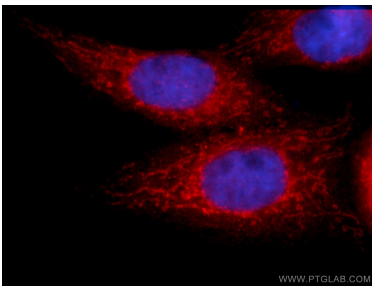
IP result of anti-hIST1 (IP:19842-1-AP, 4ug; Detection:19842-1-AP 1:1000) with mouse liver tissue lysate 4000ug.



Immunohistochemical analysis of paraffin-embedded human kidney tissue slide using 19842-1-AP (hIST1 Antibody) at dilution of 1:50 (under 40x lens).



Immunohistochemical analysis of paraffin-embedded human hepatocirrhosis tissue slide using 19842-1-AP (hIST1 Antibody) at dilution of 1:50 (under 40x lens).



Immunofluorescent analysis of HepG2 cells using 19842-1-AP (hIST1 antibody) at dilution of 1:25 and Alexa Fluor 594-conjugated Goat Anti-Rabbit IgG(H+L).