

For Research Use Only

TRUB2 Polyclonal antibody

Catalog Number: 19891-1-AP

Featured Product

2 Publications



Basic Information

Catalog Number:

19891-1-AP

Size:

150ul, Concentration: 800 ug/ml by Nanodrop and 400 ug/ml by Bradford method using BSA as the standard;

Source:

Rabbit

Isotype:

IgG

Immunogen Catalog Number:

AG13726

GenBank Accession Number:

BC001457

GeneID (NCBI):

26995

UNIPROT ID:

O95900

Full Name:

TruB pseudouridine (psi) synthase homolog 2 (E. coli)

Calculated MW:

331 aa, 37 kDa

Observed MW:

37 kDa

Purification Method:

Antigen affinity purification

Recommended Dilutions:

WB 1:1000-1:4000

IHC 1:1000-1:4000

Applications

Tested Applications:

WB, IHC, ELISA

Cited Applications:

WB

Species Specificity:

human

Cited Species:

human

Note-IHC: suggested antigen retrieval with TE buffer pH 9.0; (*) Alternatively, antigen retrieval may be performed with citrate buffer pH 6.0

Positive Controls:

WB : HT-1080 cells, HeLa cells, HepG2 cells, K-562 cells

IHC : human colon cancer tissue,

Notable Publications

Author	Pubmed ID	Journal	Application
Hana Antonicka	27974379	EMBO Rep	WB
Nicholas J Kramer	37770567	Nat Cell Biol	WB

Storage

Storage:

Store at -20°C. Stable for one year after shipment.

Storage Buffer:

PBS with 0.02% sodium azide and 50% glycerol pH 7.3.

Aliquoting is unnecessary for -20°C storage

*** 20ul sizes contain 0.1% BSA

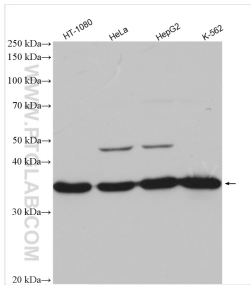
For technical support and original validation data for this product please contact:

T: 1 (888) 4PTGLAB (1-888-478-4522) (toll free in USA), or 1(312) 455-8498 (outside USA)

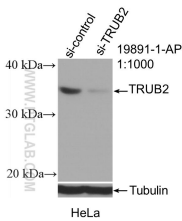
E: proteintech@ptglab.com
W: ptglab.com

This product is exclusively available under Proteintech Group brand and is not available to purchase from any other manufacturer.

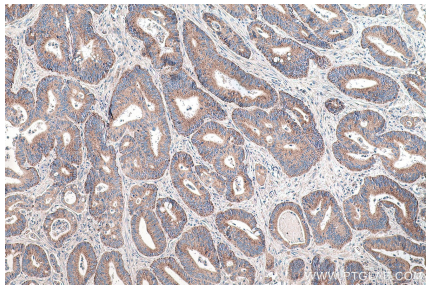
Selected Validation Data



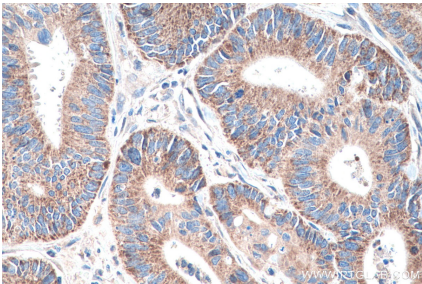
Various lysates were subjected to SDS PAGE followed by western blot with 19891-1-AP (TRUB2 antibody) at dilution of 1:2000 incubated at room temperature for 1.5 hours.



WB result of TRUB2 antibody (19891-1-AP; 1:1000; incubated at room temperature for 1.5 hours) with sh-Control and sh-TRUB2 transfected HeLa cells.



Immunohistochemical analysis of paraffin-embedded human colon cancer tissue slide using 19891-1-AP (TRUB2 antibody) at dilution of 1:2000 (under 10x lens). Heat mediated antigen retrieval with Tris-EDTA buffer (pH 9.0).



Immunohistochemical analysis of paraffin-embedded human colon cancer tissue slide using 19891-1-AP (TRUB2 antibody) at dilution of 1:2000 (under 40x lens). Heat mediated antigen retrieval with Tris-EDTA buffer (pH 9.0).